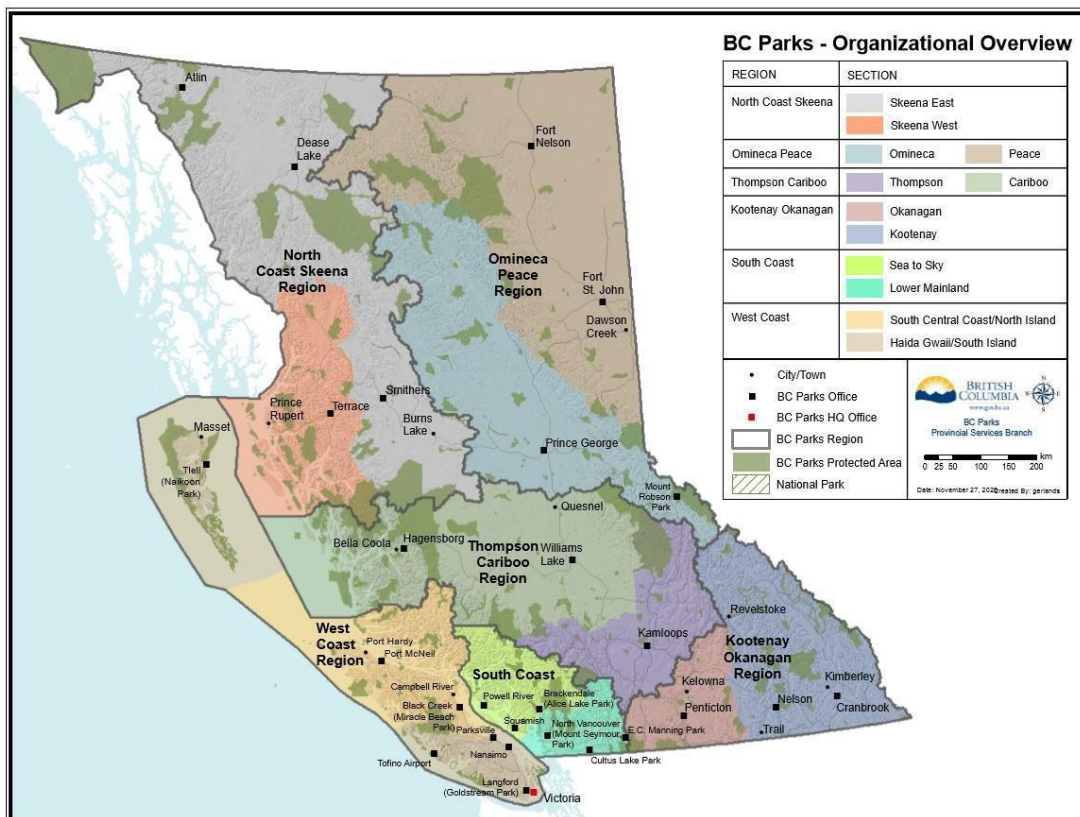


# Park Contacts, Conditions, and Restrictions

This document provides information on filming conditions, restrictions and contact information for individual provincial parks. The document is broken down by administrative boundaries for the provincial parks system, which consists of geographically based 'sections'. The map below will give a general sense of the administrative boundaries for the BC Parks' sections that you can see in the [Table of Contents](#).

If you are unsure as to the geographical location of a park, BC Parks' website provides the following tool to search for parks by location: [BC Parks Map \(arcgis.com\)](http://BC Parks Map (arcgis.com)).

If you cannot find a park listed on our website or in this document it may be managed by another jurisdiction (National Parks, Regional Parks, Municipal Parks). You will need to contact these other jurisdictions to confirm what permissions you need.



# Table of Contents

## BC Parks' Regions and Sections

South Coast .....	3
Lower Mainland Section .....	3
Sea to Sky Section .....	21
West Coast .....	43
South Island.....	43
Mid Island / Haida G'waii.....	45
North Island / Central Coast .....	48
Kootenay Okanagan.....	50
Kootenay .....	50
Okanagan .....	52
North Coast Skeena .....	53
Skeena (East).....	53
Skeena (West) .....	55
Omineca Peace.....	58
Omineca .....	58
Peace.....	59
Thompson Cariboo.....	60
Thompson .....	60
Cariboo.....	62

# South Coast

## Lower Mainland Section

All filming applicants must consult with the BC Parks Area Supervisor (see contact for Section Head below) to assess the viability of proposed filming activities prior to completing an application. Applicants may be assigned to work with a contractor, referred to as a Film Permit Liaison, to complete their application. The applicant will be invoiced by BC Parks for the Film Permit Liaison's time.

Robert Wilson – Parks and Protected Areas Section Head  
[robert.w.wilson@gov.bc.ca](mailto:robert.w.wilson@gov.bc.ca)  
(778) 752-5949  
2950 Columbia Valley Highway; PO Box 3010, Cultus Lake, BC  
V2R 5H6

Alternative commercial filming information can be found at:  
[Filming Permits \(metrovancover.org\)](http://metrovancover.org)

## Coquihalla Canyon

<b>Location:</b>	166km from Vancouver	
<b>Park Contact:</b>	Area Supervisor: Daris LaPointe	Email: <a href="mailto:daris.lapointe@gov.bc.ca">daris.lapointe@gov.bc.ca</a> Phone: (778) 752-5955
<b>Accessible Features:</b>	<ul style="list-style-type: none"><li>• <b>Special Feature:</b> Tunnels</li><li>• Trails</li></ul>	<ul style="list-style-type: none"><li>• Cliffs</li><li>• White-water river</li></ul>
<b>Services and Facilities:</b>	<ul style="list-style-type: none"><li>• Picnic Areas</li></ul>	<ul style="list-style-type: none"><li>• Pit toilets</li></ul>
<b>Important Dates</b> - <i>Special Conditions and Closures</i>	<b>Spring opening dates:</b> The Othello Tunnels area of this park is subject to an annual inspection for rock and debris fall hazard prior to the opening day (typically May long- weekend). BC Parks must complete all scaling and park preparation prior to the Spring opening to ensure the Park is safe for public use. Weather and other factors can limit when this work is completed. Safety concerns may limit opportunities to film prior to this time.  <b>When the Park is open:</b> Filming is not likely to be permitted on weekends or holidays to avoid interference with public use and access.	

*Restrictions and Conditions*

**Spring opening to October 15<sup>th</sup>:** BC Parks will require filming conditions that may limit the viability of filming in this park in order to ensure public access and to maintain the park experience. Conditions can restrict the number of vehicles, cast and crew allowed on site, use of non- handheld equipment, prohibit closures to roads and trails, limit or prohibit special effects, etc.

**October 31<sup>st</sup> to Spring opening date:** Filming during this time may require the completion of geotechnical assessments, subsequent rock scaling and a detailed safety plan implemented in order to ensure a safe work zone. There is a significant rock fall hazard in this park during the winter months.

- This is a very busy Park from the May long weekend until the Thanksgiving long weekend. Filming opportunities are limited during that time. BC Parks will require conditions to film activities that may limit the viability of filming in this park in order to ensure public access and to maintain the park experience.
- This park has unique and sensitive Park values. Filming opportunities are limited in this park to ensure the protection of park values.
- All filming applicants must consult with the BC Parks Area Supervisor to assess the viability of proposed filming activities. Applicants may be assigned to work with a contractor, referred to as a Film Permit Liaison, to complete their application. The applicant will be invoiced by BC Parks for the Film Permit Liaison’s time.
- There is a significant rock fall hazard through portions of the park. Filming applicants may be required to complete geotechnical assessments and complete subsequent required rock scaling in order to ensure a safe work zone.

*Alternate Locations*

[Chilliwack Creative Commission - City of Chilliwack](#)

**Cultus Lake**

<i>Location:</i>	110km from Vancouver	
<i>Park Contact:</i>	Area Supervisor: Daris LaPointe	Email: daris.lapointe@gov.bc.ca Phone: (778) 752-5955

*Accessible Features:*

- Beaches
- Forest
- Lake
- Mountains
- Trails

*Services and Facilities:*

- Campgrounds/Vehicle access
- Picnic areas
- Pit or flush toilets
- Showers

*Important Dates*

*- Special Conditions and Closures*

**Year round:** Filming is not likely to be permitted on weekends or holidays all year to avoid interference with public use and access except during times when campgrounds and day use areas are not accessible to the public (e.g. gates locked). Filming may not be approved in certain areas due to environmental considerations.

**May 15<sup>th</sup> to October 15<sup>th</sup>:** BC Parks will require conditions to film activities that may limit the viability of filming in this park in order to ensure public access and to maintain the park experience. Conditions can restrict the number of vehicles, cast and crew allowed on site, use of non- hand held equipment, prohibit closures to roads and trails, limit or prohibit special effects, etc.

**July 1<sup>st</sup> to September 7<sup>th</sup>:** Filming is not likely to be permitted during this time to avoid interference with public use and access.

*Restrictions and Conditions*

- This is a very busy Park from the May long weekend until the Thanksgiving long weekend. Filming opportunities are limited during that time. BC Parks will require conditions to film activities that may limit the viability of filming in this park in order to ensure public access and to maintain the park experience.
- This park has unique and sensitive Park values. Filming opportunities are limited in this park to ensure the protection of park values.
- All filming applicants must consult with the BC Parks Area Supervisor to assess the viability of proposed filming activities. Applicants may be assigned to work with a contractor, referred to as a Film Permit Liaison, to complete their application. The applicant will be invoiced by BC Parks for the Film Permit Liaison's time.

*Alternate Locations*

[Chilliwack Creative Commission - City of Chilliwack](#)

## Cypress

<i>Location:</i>	20.5km from Vancouver	
<i>Park Contact:</i>	Area Supervisor: Ryan Village	Email: ryan.village@gov.bc.ca Phone: (604) 793-6430
<i>Accessible Features:</i>	<ul style="list-style-type: none"> <li>• Road access</li> <li>• Small Alpine lakes</li> <li>• Forest</li> </ul>	<ul style="list-style-type: none"> <li>• Mountains</li> <li>• Trails</li> </ul>
<i>Services and Facilities:</i>	<ul style="list-style-type: none"> <li>• Seasonal parking (fees may be in effect)</li> <li>• Camping</li> </ul>	<ul style="list-style-type: none"> <li>• Picnic areas</li> <li>• Pit and flush toilets</li> </ul>
<i>Important Dates</i> - <i>Special Conditions and Closures</i>	<p>Under Park Use Permit 1506 Cypress Bowl Recreations Ltd (CBRL) has the right to control/authorize activities within the (controlled) recreation area of this park. Use of facilities or areas managed by CBRL will require that arrangements be made with that company. For more information, please contact 604-913-6712 or email <a href="mailto:marketing@cypressmountain.com">marketing@cypressmountain.com</a></p> <p><b>Additional fees may apply. BC Parks will not authorize any filming activity in the resort's permit area unless the applicant has written consent from CBRL.</b></p> <p>In the event that weather should deteriorate and commercial filming impact snow clearing or any other CBRL operations, the permit will be postponed to a later date.</p> <p>Filming is not permitted on weekends or holidays to avoid interference with public use and access.</p>	
<i>Restrictions and Conditions</i>	<ul style="list-style-type: none"> <li>• This park has unique and sensitive park values. Filming opportunities are limited in this park to ensure the protection of park values.</li> <li>• All filming applicants must consult with the BC Parks Area Supervisor to assess the viability of proposed filming activities. Applicants may be assigned to work with a contractor, referred to as a Film Permit Liaison, to complete their application. The applicant will be invoiced by BC Parks for the Film Permit Liaison's time.</li> </ul>	

<i>Alternate Locations</i>	<ul style="list-style-type: none"> <li>• This is a very busy park year-round, with peak use in both the summer and winter. In the winter, the Park is often at capacity with snowshoers and skiers. Filming opportunities are limited during the peak times. BC Parks will require conditions to film activities that may limit the viability of filming in this park in <b>order to ensure public access and to maintain the park experience.</b></li> <li>• <b>Cypress Bowl Recreations Ltd operates a resort in the park. The Province has granted Cypress Bowl Recreations Ltd additional rights in order to provide recreation opportunities to the public. Cypress Bowl Recreations Ltd may restrict filming opportunities in order to provide recreation opportunities for the public.</b></li> <li>• <b>Any proposed road work will require a Traffic management plan (TMP) which must meet Ministry of Highways &amp; Infrastructure standards.</b></li> </ul>
	<a href="#">Filming   District of West Vancouver</a>

## Golden Ears

<i>Location:</i>	<i>61km from Vancouver</i>	
<i>Park Contact:</i>	Area Supervisor: Daris LaPointe	Email: <a href="mailto:daris.lapointe@gov.bc.ca">daris.lapointe@gov.bc.ca</a> Phone: (778) 752-5955
<i>Accessible Features:</i>	<ul style="list-style-type: none"> <li>• <b>Special Feature:</b> Beaches, Lake, Mountain Vistas</li> <li>• Road access</li> <li>• Forest</li> <li>• Large campgrounds</li> <li>• Trails</li> </ul>	
<i>Services and Facilities:</i>	<ul style="list-style-type: none"> <li>• Showers</li> <li>• Power</li> <li>• Campgrounds/Vehicle access</li> <li>• Picnic areas</li> <li>• Pit and flush toilets</li> </ul>	
<i>Important Dates</i> - <i>Special Conditions and Closures</i>	<b>Year round:</b> Filming is not generally permitted on weekends or holidays to avoid interference with public use and access. BC Parks will require conditions to film activities which may limit the viability of filming in this park in order to ensure public access and to maintain the park experience. Conditions can restrict the number of vehicles,	

*Restrictions and Conditions*

cast and crew allowed on site, use of non- hand-held equipment, prohibit closures to roads and trails, limit or prohibit special effects, etc.

**May 1<sup>st</sup> to October 15<sup>th</sup>:** Park is closed to filming due to high use.

- This is a very busy Park from the May long weekend until the Thanksgiving long weekend. Filming opportunities are limited during that time. BC Parks will require conditions to film activities that may limit the viability of filming in this park in order to ensure public access and to maintain the park experience.
- All filming applicants must consult with the BC Parks Area Supervisor to assess the viability of proposed filming activities. Applicants may be assigned to work with a contractor, referred to as a Film Permit Liaison, to complete their application. The applicant will be invoiced by BC Parks for the Film Permit Liaison’s time.
- Major shoots that will impact natural values are not likely to be permitted on "The Trail of The Fallen Giants," due to site sensitivity and difficult access.
- Only one production company may film in the park at a time. This is a very popular destination for the film industry. Applicants should apply for a permit well in advance of the production date in order to secure desired dates.
- Filming requests for the North Beach area may require road surfacing (up to approximately 4 loads of road-base gravel) and grading and compacting upon completion of filming due to the heavy impact that production vehicles have on the steep grade.
- Agreements/negotiations may be required with Park Operator and/or [Katzie First Nation](#) for the use of this area.

*Alternate Locations*

[Filming | City of Pitt Meadows](#)  
[Filming in Maple Ridge | Maple Ridge, BC](#)

Mount Seymour

<i>Location:</i>	18.7km from Vancouver	
<i>Park Contact:</i>	Area Supervisor: Nicole Phillips	Email: Nicole.A.Phillips@gov.bc.ca Phone: 604-817-3452



*Accessible Features:*

- City views
- Road access
- Ski runs
- Large parking lot
- Small alpine lake
- Forest
- Meadow
- Mountains
- Mountain Road
- Trails

*Services and Facilities:*

- Large parking lots
- Pit toilets
- Picnic areas

*Important Dates*

- *Special Conditions and Closures*

**Year round:** Filming is not permitted on weekends or holidays to avoid interference with public use and access. Filming may not be approved in some areas due to environmental considerations or restricted to times when snow cover is adequate to prevent damage to the creek bed, creek banks and forested area

**June 1<sup>st</sup> to October 15<sup>th</sup>:** BC Parks will require conditions to film activities that may limit the viability of filming in this park in order to ensure public access and to maintain the park experience.

**Winter Restrictions:** During the winter season (November 15th to May 1st), Mt Seymour Resorts operates a ski hill in the Park. In addition, the Park is a popular destination for winter backcountry users. The Park can be extremely busy on peak days with significant road and parking lot congestion. There is active snow clearing of parking lots and roads. Mt Seymour Resorts and BC Parks restrict filming opportunities in order to provide winter recreation opportunities to the public.

1. **November 15<sup>th</sup> to May 1<sup>st</sup>:** Filming applicant must have written consent of Mt Seymour Resorts Ltd for filming within the ski area permit (upper parking lots and ski runs).
  - a. **Under Park Use Permit 1505 Mt Seymour Resorts Ltd has the right to control/authorize activities within the (controlled) recreation area of this park. Use of facilities or areas managed by Mt Seymour Resorts Ltd will require that arrangements be made with that company. For more information, please contact 604-986-2261 ext. 241.**
  - b. **Additional fees may apply. BC Parks will not issue a Park Use Permit for any activity in the resort permit area unless the applicant has written consent from Mt Seymour Resorts Ltd.**

## *Restrictions and Conditions*

- c. In the event that weather should deteriorate and commercial filming impact snow clearing or any other of Mt Seymour Resorts Ltd operations, the permit will be postponed to a later date.
2. **December 1<sup>st</sup> to March 31<sup>st</sup>:** No filming on Mount Seymour Road - the main access road through the park. High public use and winter road conditions limits the possibility of filming on the road.
3. **December 15<sup>th</sup> to February 28<sup>th</sup>:** No filming in the upper portion of the park from parking lot 1 to parking lot 5, including the ski area.
4. **March 1<sup>st</sup> to April 1<sup>st</sup>:** Limited filming may be considered in upper parking lots and ski area.

**December 1<sup>st</sup> to April 1<sup>st</sup>:** No filming activities are permitted on holidays and Fridays, Saturday, and Sundays.

- This park has unique and sensitive park values. Filming opportunities are limited in this park to ensure the protection of park values.
- All filming applicants must consult with the BC Parks Area Supervisor to assess the viability of proposed filming activities. Applicants may be assigned to work with a contractor, referred to as a Film Permit Liaison, to complete their application. The applicant will be invoiced by BC Parks for the Film Permit Liaison's time.
- This is a very busy park year-round with peak use in the summer and winter. In the winter, the park is often at capacity with snowshoers and skiers. Filming opportunities are limited during the peak times. BC Parks will require conditions to film activities that may limit the viability of filming in this park in order to ensure public access and to maintain the park experience.
- During the winter season (November 15<sup>th</sup> to May 1<sup>st</sup>), Mt Seymour Resorts operates a ski hill in the park. The Province has granted Mt Seymour Resorts additional rights in order to provide winter recreation opportunities to the public. **Mt Seymour Resorts may restrict filming opportunities in order to provide winter recreation opportunities to the public.**
- Any proposed road work will require a Traffic Management Plan (TMP) which must meet Ministry of Highways &

<i>Alternate Locations</i>	Infrastructure standards.
	<a href="#">Filming   City of North Vancouver (cnv.org)</a>
	<a href="#">Filming in the District   District of North Vancouver (dnpv.org)</a>
	<a href="#">Filming Permits (metrovancover.org)</a>

## Peace Arch

<i>Location:</i>	47.5km from Vancouver	
<i>Park Contact:</i>	Area Supervisor: Nicole Phillips	Email: Nicole.A.Phillips@gov.bc.ca Phone: 604-817-3452
<i>Accessible Features:</i>	<ul style="list-style-type: none"> <li>• <b>Special Feature:</b> Peace Arch</li> <li>• Flower gardens</li> <li>• Lily pond</li> <li>• Grassy areas</li> <li>• Heritage hall</li> </ul>	
<i>Services and Facilities:</i>	<ul style="list-style-type: none"> <li>• Flush toilets</li> <li>• Large picnic building</li> </ul>	
<i>Important Dates</i> - <i>Special Conditions and Closures</i>	<p><b>Year round:</b> Filming is not permitted on weekends or holidays to avoid interference with public use and access. BC Parks will require conditions to filming activities that may limit the viability filming in this park in order to ensure public access and to maintain the park experience.</p>	
<i>Restrictions and Conditions</i>	<ul style="list-style-type: none"> <li>• This is a very busy park year-round. Much of the activity is due to the international border crossing that transects parks on both sides of the border. Filming opportunities are limited due to the border activity. BC Parks will require conditions to film activities that may limit the viability of filming in this park in order to ensure public access and to maintain the park experience. In addition, filming applicant may need to consult with border service, Semiahmoo First Nations, and Ministry of Transportation.</li> <li>• All filming applicants must consult with the BC Parks Area Supervisor to assess the viability of proposed filming activities. Applicants may be assigned to work with a contractor, referred to as a Film Permit Liaison, to complete their application. The applicant will be invoiced by BC Parks for the Film Permit Liaison's time.</li> <li>• Limited parking available</li> </ul>	
<i>Alternate Locations</i>	<a href="#">Filming in Surrey   City of Surrey</a>	

## Pinecone Burke

<b>Location:</b>	<i>46km from Vancouver</i>	
<b>Park Contact:</b>	Area Supervisor: Nicole Phillips	Email: Nicole.A.Phillips@gov.bc.ca Phone: 604-817-3452
<b>Accessible Features:</b>	<ul style="list-style-type: none"> <li>Alpine meadows</li> <li>Glacier backdrop</li> <li>Forest</li> </ul>	<ul style="list-style-type: none"> <li>Lakes</li> <li>Mountain backdrop</li> <li>Trails</li> </ul>
<b>Services and Facilities:</b>	<ul style="list-style-type: none"> <li>Rustic camping areas</li> <li>Pit toilets</li> </ul>	<ul style="list-style-type: none"> <li>Picnic areas</li> </ul>
<b>Important Dates</b> - <i>Special Conditions and Closures</i>	<b>May 15<sup>th</sup> to October 15<sup>th</sup>:</b> BC Parks will require conditions to filming activities that may limit the viability filming in this park in order to ensure public access and to maintain the park experience.	
<b>Restrictions and Conditions</b>	<ul style="list-style-type: none"> <li>All filming applicants must consult with the BC Parks Area Supervisor to assess the viability of proposed filming activities. Applicants may be assigned to work with a contractor, referred to as a Film Permit Liaison, to complete their application. The applicant will be invoiced by BC Parks for the Film Permit Liaison's time.</li> <li>Limited access and facilities</li> </ul>	
<b>Alternate Locations</b>	<a href="#">Filming   Coquitlam, BC</a>	

## Porteau Cove

<b>Location:</b>	<i>46.8km from Vancouver</i>	
<b>Park Contact:</b>	Area Supervisor: Ryan Village	Email: ryan.village@gov.bc.ca Phone: (604) 793-6430
<b>Accessible Features:</b>	<ul style="list-style-type: none"> <li>Beach</li> <li>Coves</li> <li>Forest</li> </ul>	<ul style="list-style-type: none"> <li>Mountains</li> <li>Oceans</li> <li>Shorelines</li> </ul>
<b>Services and Facilities:</b>	<ul style="list-style-type: none"> <li>Electrified campsites</li> <li>Camping/Vehicle access</li> <li>Picnic areas</li> <li>Pit and flush toilets</li> <li>Showers</li> </ul>	<ul style="list-style-type: none"> <li>Contact CN Rail in Vancouver to request use of their adjacent private land for production unit parking, marshalling, equipment storage, catering space, etc</li> </ul>

## *Important Dates*

- *Special Conditions and Closures*

## *Restrictions and Conditions*

Seasonal restrictions to filming are in effect, supported by the BC Film Commission and the Ministry of Transportation (MoT). Additionally, no filming activity will be permitted in campgrounds during these dates due to generally full occupancy.

- **Year round:** Filming is not generally permitted on weekends or holidays to avoid interference with public use and access.
- **April 1<sup>st</sup> to September 15<sup>th</sup>:** No filming activity may be permitted in this park during these dates due to high public use.
- Due to the complexity and multi-jurisdictional overlap, several different permits are required to film in this park. The applicant may be required to consult and acquire permits from CN Rail, BC Ferries, Department of Fisheries and Oceans, and MOTI in addition to a BC Parks Park Use Permit.
- Due to limitations of park sewage treatment capacity, the production company will be required to provide portable toilet facilities.
- This park is operated by a Park Operator. All filming applicants must consult with the Park Operator to assess the viability of proposed filming activities.
- This is a very busy Park from the May long weekend until the Thanksgiving long weekend. Filming opportunities are limited during that time. BC Parks will require conditions to film activities that may limit the viability of filming in this park in order to ensure public access and to maintain the park experience.
- All filming applicants must consult with the BC Parks Area Supervisor to assess the viability of proposed filming activities. Applicants may be assigned to work with a contractor, referred to as a Film Permit Liaison, to complete their application. The applicant will be invoiced by BC Parks for the Film Permit Liaison's time.
- Use of beach areas is restricted due to marine conservation values.
- Use of the day use parking lots by film companies will be limited at the discretion of BC Parks.
- BC Parks may implement, at their discretion, "park rest windows", whereby park natural resources, facilities,

*Use of the Porteau  
Cove Emergency  
Ferry Dock*

visitors, and other Permittees get a break from otherwise steady filming activities and related disruption.

- **All initial inquiries/contacts by film production companies seeking to use the dock must be first made to BC Parks, then to the Ministry of Transportation.**
- Intention to film requests require a minimum of ten working days' notice.
- **A mandatory site survey involving representatives from BC Parks, MoT, BC Ferry Corporation, and the film production company will be required for ferry dock filming requests.**
- Highway works (i.e., maintenance and construction) always take precedence over any filming activity.
- The dock facility must be accessible in case of an emergency impacting the highway for use by the traveling public. In case of highway emergency (i.e. washout, flood, rockslide, etc.) the production company must vacate the area and leave it clear immediately or within one hour of verbal notification of the emergency.
- For major shoots there will be a minimum \$20,000 Financial Guarantee.
- An underwater biophysical survey may be required of the film production company.
- before and after film production activities to assess and document effects on marine life.
- Operation of the ferry ramp is under the authority of the Ministry of Transportation who, in turn, contract out operation and maintenance to the BC Ferry Corporation at established rates of service. The film production company shall be expected to pay for such services at the established rates.

**The following BC Ferry Corporation (BCFC) ferry dock operational concerns must be met:**

- An experienced operator, normally a dock repairperson from the Horseshoe Bay Terminal Maintenance Department, must staff the ramp. This operator will not deviate from BCFC standard procedures for the safe operation of the ramp.

- If a ship other than a BCFC ferry is to dock at Porteau Cove, the film production company must provide drawings and any other details necessary to complete an evaluation of the proposal to ensure the berth will not be damaged.
- If the film production company wants to deviate from the normal operating procedure of the ramp for any reason, such must be agreed to in advance since the operator on site will not have the authority to change procedures. If the changes require engineering evaluation, the film production company will do so. BCFC Terminal Maintenance Department will offer names of qualified consultants.
- Any work required to repair damage caused by film production activities will be billed at rates as established in the MoT/BCFC contract.
- If there is any question about damage to the ramp there must be a post filming site inspection by BCFC Terminal Maintenance personnel and representatives from the film production company.
- **A traffic management plan will be required to deal with traffic congestion and visitor access through and around filming sites.**
- Launching of vehicles off the ferry dock is not permitted.
- Any approved modifications of the facility must be restored to their original or better condition.
- The film production company must provide a communication plan outlining any proposed advertising of the filming activities. This plan must be approved by BC Parks and MoT prior to implementation.
- Any accessories or attachments to the dock are considered a part of the facility.
- Contributions to the MoT for maintenance of the pier are requested based on a needs assessment.

### *Alternate Locations*

Darrel Bay ferry and dock facilities (contact Western Pulp Ltd at (604) 892-6600); numerous Squamish waterfront locations, Furry Creek, Britannia, Minaty Bay, Lions Bay, Sunset Marina. Piers are also available at White Rock, Deep Cove, Ambleside, and Jericho.

Rail facilities and trains are also available at CN Rail's yard in Squamish and at the West Coast Heritage Railway Park (ph.: 604-898-9336) adjacent to CN Rail's yard in Squamish.

<p><b>Contact Information</b> (expect changes)</p>	<p><b>CN Rail:</b></p> <ul style="list-style-type: none"> <li>Attn: Film Liaison, Rod Salmon Office Ph: (604) 984-5459</li> </ul> <p><b>Ministry of Transportation:</b></p> <ul style="list-style-type: none"> <li>Filming Coordinator Office: (604) 527-2221 10 – 1500 Woolridge Street Coquitlam, B.C. V3K 0B8 <a href="mailto:filming@gov.bc.ca">filming@gov.bc.ca</a></li> </ul>
--	--

## Rolley Lake

<b>Location:</b>	67km from Vancouver	
<b>Park Contact:</b>	Area Supervisor: Daris LaPointe	Email: <a href="mailto:daris.lapointe@gov.bc.ca">daris.lapointe@gov.bc.ca</a> Phone: (778) 752-5955
<b>Accessible Features:</b>	<ul style="list-style-type: none"> <li>Beach</li> <li>Lake</li> </ul>	<ul style="list-style-type: none"> <li>Campgrounds</li> <li>Trails</li> </ul>
<b>Services and Facilities:</b>	<ul style="list-style-type: none"> <li>Showers</li> <li>Vehicle access camping</li> </ul>	<ul style="list-style-type: none"> <li>Picnic areas</li> <li>Pit and flush toilets</li> </ul>
<b>Important Dates</b> - <i>Special Conditions and Closures</i>	<p><b>May 15<sup>th</sup> to October 15<sup>th</sup>:</b> BC Parks will require conditions to film activities that may limit the viability of filming in this park in order to ensure public access and to maintain the park experience. Conditions can restrict the number of vehicles, cast and crew allowed on site, use of non- handheld equipment, prohibit closures to roads and trails, limit or prohibit special effects, etc.</p> <p><b>May 15<sup>th</sup> to October 1<sup>st</sup>:</b> Filming is not likely to be permitted on weekends or holidays to avoid interference with public use and access.</p>	
<b>Restrictions and Conditions</b>	<ul style="list-style-type: none"> <li>This is a busy Park from the May long weekend until the Thanksgiving long weekend. Filming opportunities are limited during that time. BC Parks will require conditions to film activities that may limit the viability of filming in this park in order to ensure public access and to maintain the park experience.</li> <li>All filming applicants must consult with the BC Parks Area Supervisor to assess the viability of proposed filming activities. Applicants may be assigned to work with a contractor, referred to as a Film Permit Liaison, to complete</li> </ul>	



	their application. The applicant will be invoiced by BC Parks for the Film Permit Liaison's time.
<i>Alternate Locations</i>	<a href="#">Filming   City of Pitt Meadows</a> <a href="#">Filming in Maple Ridge   Maple Ridge, BC</a>

## Sasquatch

<i>Location:</i>	145km from Vancouver	
<i>Park Contact:</i>	Area Supervisor: Daris LaPointe	Email: daris.lapointe@gov.bc.ca Phone: (778) 752-5955
<i>Accessible Features:</i>	<ul style="list-style-type: none"> <li>• Beach</li> <li>• Lake</li> <li>• Mountain backdrop</li> <li>• Forest</li> </ul>	<ul style="list-style-type: none"> <li>• Campgrounds</li> <li>• Trails</li> <li>• Gravel roads</li> </ul>
<i>Services and Facilities:</i>	<ul style="list-style-type: none"> <li>• Campgrounds/Vehicle access</li> <li>• Pit and flush toilets</li> </ul>	<ul style="list-style-type: none"> <li>• Picnic areas</li> </ul>
<i>Important Dates</i> - <i>Special Conditions and Closures</i>	<p><b>May 15<sup>th</sup> to October 15<sup>th</sup>:</b> BC Parks will require conditions to film activities that may limit the viability of filming in this park in order to ensure public access and to maintain the park experience. Conditions can restrict the number of vehicles, cast and crew allowed on site, use of non- hand held equipment, prohibit closures to roads and trails, limit or prohibit special effects, etc.</p> <p><b>May 15<sup>th</sup> to October 15<sup>th</sup>:</b> Filming is not likely to be permitted on weekends or holidays to avoid interference with public use and access.</p>	
<i>Restrictions and Conditions</i>	<ul style="list-style-type: none"> <li>• This is a very busy Park from the May long weekend until the Thanksgiving long weekend. Filming opportunities are limited during that time. BC Parks will require conditions to film activities that may limit the viability of filming in this park in order to ensure public access and to maintain the park experience.</li> <li>• All filming applicants must consult with the BC Parks Area Supervisor to assess the viability of proposed filming activities. Applicants may be assigned to work with a contractor, referred to as a Film Permit Liaison, to complete their application. The applicant will be invoiced by BC Parks for the Film Permit Liaison's time.</li> </ul>	
<i>Alternate Locations</i>	<a href="#">Filming Notice   Harrison Hot Springs</a>	

Say Nuth Khaw Yum Provincial Park [aka Indian Arm Park]

<i>Location:</i>	35.6km from Vancouver	
<i>Park Contact:</i>	Area Supervisor: Nicole Phillips	Email: Nicole.A.Phillips@gov.bc.ca Phone: 604-817-3452
<i>Accessible Features:</i>	<ul style="list-style-type: none"> <li>• Ocean</li> <li>• Beaches</li> <li>• Creeks</li> <li>• Forest</li> </ul>	<ul style="list-style-type: none"> <li>• Lakes</li> <li>• Mountains</li> <li>• Shorelines</li> <li>• Waterfalls</li> </ul>
<i>Services and Facilities:</i>	<ul style="list-style-type: none"> <li>• Camping</li> <li>• Pit and flush toilets</li> </ul>	<ul style="list-style-type: none"> <li>• Picnic areas</li> </ul>
<i>Important Dates</i> - <i>Special Conditions and Closures</i>	<b>May 15<sup>th</sup> to October 15<sup>th</sup>:</b> Filming is not permitted on weekends or holidays to avoid interference with public use and access.	
<i>Restrictions and Conditions</i>	<ul style="list-style-type: none"> <li>• All filming applicants must consult with the BC Parks Area Supervisor to assess the viability of proposed filming activities. Applicants may be assigned to work with a contractor, referred to as a Film Permit Liaison, to complete their application. The applicant will be invoiced by BC Parks for the Film Permit Liaison's time.</li> <li>• All filming applications will be routed through a co-management board comprising of the Tsleil-Waututh Nation and BC Parks.</li> <li>• In recognition of the co-management agreement between BC Parks and the Tsleil- Waututh First Nation, the film company must contact the band office to explore any employment/training opportunities for their members. For more information, please visit their <a href="#">website</a> or call 604-929-3454</li> </ul>	
<i>Alternate Locations</i>	<a href="#">Filming   City of North Vancouver (cnv.org)</a> <a href="#">Filming in the District   District of North Vancouver (dnv.org)</a> <a href="#">Filming Permits (metrovancouver.org)</a>	

## Skagit Valley

<i>Location:</i>	196km from Vancouver	
<i>Park Contact:</i>	Area Supervisor: Daris LaPointe	Email: daris.lapointe@gov.bc.ca Phone: (778) 752-5955
<i>Accessible Features:</i>	<ul style="list-style-type: none"> <li>• <b>Special Feature:</b> Reservoir</li> <li>• Spring – drained reservoir with exposed stumps</li> <li>• Lake</li> <li>• Mountain backdrop</li> <li>• River</li> <li>• Valley</li> <li>• Trails</li> <li>• Views of Canada/US border cut-line across lake</li> </ul>	
<i>Services and Facilities:</i>	<ul style="list-style-type: none"> <li>• Campgrounds/Vehicle access</li> <li>• Picnic areas</li> <li>• Pit toilets</li> <li>• Boat launch</li> </ul>	
<i>Important Dates</i> - <i>Special Conditions and Closures</i>	<p><b>July 1st to September 15:</b> BC Parks will require conditions to film activities that may limit the viability of filming in this park in order to ensure public access and to maintain the park experience. Conditions can restrict the number of vehicles, cast and crew allowed on site, use of non- handheld equipment, prohibit closures to roads and trails, limit or prohibit special effects, etc.</p> <p>The Ross Reservoir typically comes to full pool by <b>July 1<sup>st</sup></b>, dependant on environmental conditions (drought, low snowpack, heavy rains, etc.).</p>	
<i>Restrictions and Conditions</i>	<ul style="list-style-type: none"> <li>• All filming applicants must consult with the BC Parks Area Supervisor to assess the viability of proposed filming activities. Applicants may be assigned to work with a contractor, referred to as a Film Permit Liaison, to complete their application. The applicant will be invoiced by BC Parks for the Film Permit Liaison’s time.</li> <li>• The Ross Lake reservoir spans across the Canadian and US border. All customs and specific regulations are in effect for the <a href="#">North Cascade National Park</a>. Permits for filming in Skagit Valley Park do not authorize filming in the North Cascade National Park.</li> <li>• The Ross Lake reservoir is located approximately 56km Silver-Skagit Rd, which is gravel-surfaced. The road is typically graded in the Spring every year. Road conditions typically deteriorate during the late Summer or early Fall.</li> <li>• During the winter/early spring months Silver-Skagit Road</li> </ul>	

	is typically snowed-in and closed to vehicular traffic by the Ministry of Transportation and Infrastructure.
<i>Alternate Locations</i>	<a href="http://hopebc.ca">Film Industry - Hope Business and Development Society (hopebc.ca)</a>

## Sxotsagel / Chilliwack Lake

<i>Location:</i>	125km from Vancouver	
<i>Park Contact:</i>	Area Supervisor: Daris LaPointe	Email: <a href="mailto:daris.lapointe@gov.bc.ca">daris.lapointe@gov.bc.ca</a> Phone: (778) 752-5955
<i>Accessible Features:</i>	<ul style="list-style-type: none"> <li>• Beaches</li> <li>• Forest</li> <li>• Lake</li> </ul>	<ul style="list-style-type: none"> <li>• Mountains</li> <li>• Trails</li> <li>• River</li> </ul>
<i>Services and Facilities:</i>	<ul style="list-style-type: none"> <li>• Campgrounds/Vehicle access</li> </ul>	<ul style="list-style-type: none"> <li>• Pit toilets</li> </ul>
<i>Important Dates</i> - <i>Special Conditions and Closures</i>	<p><b>July 1st to September 15:</b> Filming opportunities are limited during this time. BC Parks will require conditions to film activities that may limit the viability of filming in this park in order to ensure public access and to maintain the park experience. This park is operated by a Park Operator. Campgrounds are normally full; beaches and roads are busy with park users.</p> <p><b>June 1<sup>st</sup> to September 15th:</b> Filming is not likely to be permitted on weekends or holidays to avoid interference with public use and access.</p>	
<i>Restrictions and Conditions</i>	<ul style="list-style-type: none"> <li>• All filming applicants must consult with the BC Parks Area Supervisor to assess the viability of proposed filming activities. Applicants may be assigned to work with a contractor, referred to as a Film Permit Liaison, to complete their application. The applicant will be invoiced by BC Parks for the Film Permit Liaison's time.</li> <li>• This is a very busy Park from the July long weekend until the September long weekend. Filming opportunities are limited during that time. BC Parks will require conditions to film activities that may limit the viability of filming in this park in order to ensure public access and to maintain the park experience.</li> </ul>	
<i>Alternate Locations</i>	<a href="http://chilliwackcreative.com">Chilliwack Creative Commission - City of Chilliwack</a>	

## Sea to Sky Section

All filming applicants must consult with the BC Parks Area Supervisor (see contact for Section Head below) to assess the viability of proposed filming activities prior to completing an application. Applicants may be assigned to work with a contractor, referred to as a Film Permit Liaison, to complete their application. The applicant will be invoiced by BC Parks for the Film Permit Liaison's time.

Dylan Evers – Parks and Protected Areas Section Head

[Dylan.Evers@gov.bc.ca](mailto:Dylan.Evers@gov.bc.ca)

(604) 398-5769

North Vancouver, BC

Alternative commercial filming information can be found at:

[Filming and Photography | Sea to Sky Gondola](#)

[Sea to Sky Parks](#)

## Alice Lake

<b>Location:</b>	78.1km from Vancouver	
<b>Park Contact:</b>	Area Supervisor: Erik Smeets	Email: <a href="mailto:Erik.Smeets@gov.bc.ca">Erik.Smeets@gov.bc.ca</a> Phone: (778) 266-1273
<b>Accessible Features:</b>	<ul style="list-style-type: none"> <li>• Beaches</li> <li>• Forest</li> <li>• Trails</li> </ul>	<ul style="list-style-type: none"> <li>• Lakes</li> <li>• Mountains</li> </ul>
<b>Services and Facilities:</b>	<ul style="list-style-type: none"> <li>• Picnic Area/Beach</li> <li>• Campgrounds/Vehicle access</li> </ul>	<ul style="list-style-type: none"> <li>• Pit and flush toilets</li> <li>• Showers</li> </ul>
<b>Important Dates</b> - <b>Special Conditions and Closures</b>	<p><b>Year round:</b> No filming on weekends or holidays.</p> <p><b>May 15<sup>th</sup> to October 15<sup>th</sup>:</b> BC Parks will require conditions to film activities that may limit the viability of filming in this park in order to ensure public access and to maintain the park experience. Conditions can restrict the number of vehicles, cast and crew allowed on site, use of non- handheld equipment, prohibit closures to roads and trails, limit or prohibit special effects, etc.</p> <p><b>July 1st to September 15th:</b> Seasonal filming restriction due to high public use in a confined park area.</p>	
<b>Restrictions and Conditions</b>	<ul style="list-style-type: none"> <li>• This is a very busy Park from the May long weekend until the Thanksgiving long weekend. Filming opportunities are limited during that time. BC Parks will require conditions to film</li> </ul>	

<p><i>Alternate Locations</i></p>	<p>activities that may limit the viability of filming in this park in order to ensure public access and to maintain the park experience.</p> <ul style="list-style-type: none"> <li>• This park is operated and by a Park Operator. All filming applicants must consult with the Park Operator to assess the viability of proposed filming activities.</li> <li>• This park has unique and sensitive Park values. All filming applicants must consult with the BC Parks Area Supervisor to assess the viability of proposed filming activities. Applicants may be assigned to work with a contractor, referred to as a Film Permit Liaison, to complete their application. The applicant will be invoiced by BC Parks for the Film Permit Liaison’s time.</li> <li>• Filming opportunities are limited in this park to ensure the protection of park values.</li> <li>• Filming is generally restricted to the developed portions of this park.</li> <li>• Due to limitations of park sewage treatment capacity, the production company shall provide temporary sanitary facilities (port-a-potties).</li> </ul>
	<p>Cat Lake, Brohm Lake (Squamish), Lost Lake and Alta Lake (Whistler) have beaches, trails, forest and easy access; beach areas along the upper Squamish River; Crown Forest land throughout the Sea-to-Sky Corridor.</p> <p><a href="#">Filming in Squamish - District of Squamish - Hardwired for Adventure</a>  <a href="#">Filming in Whistler   Resort Municipality of Whistler</a></p>

**Birkenhead Lake**

<p><i>Location:</i></p>	<p>213km from Vancouver</p>	
<p><i>Park Contact:</i></p>	<p>Area Supervisor: Kevin Wagner</p>	<p>Email: kevin.wagner@gov.bc.ca Phone: (778) 947-0284</p>
<p><i>Accessible Features:</i></p>	<ul style="list-style-type: none"> <li>• Beach</li> <li>• Forest</li> <li>• Trails</li> </ul>	<ul style="list-style-type: none"> <li>• Mountain backdrop</li> <li>• Lake</li> </ul>
<p><i>Services and Facilities:</i></p>	<ul style="list-style-type: none"> <li>• Camping/Vehicle access</li> <li>• Pit toilets</li> </ul>	
<p><i>Important Dates</i></p>	<p><b>July 1 to Labour Day:</b> This is a very busy Park from July 1<sup>st</sup> until September 15th. Filming opportunities are limited during that time.</p>	

<p>- <i>Special Conditions and Closures</i></p> <p><i>Restrictions and Conditions</i></p>	<ul style="list-style-type: none"> <li>• This park is operated and by a Park Operator. All filming applicants must consult with the Park Operator to assess the viability of proposed filming activities.</li> <li>• All filming applicants must consult with the BC Parks Area Supervisor to assess the viability of proposed filming activities. Applicants may be assigned to work with a contractor, referred to as a Film Permit Liaison, to complete their application. The applicant will be invoiced by BC Parks for the Film Permit Liaison’s time.</li> <li>• This site may have enough room to accommodate a relatively large filming operation as there may be space in the overflow camping sites and day use area.</li> </ul>
<p><i>Alternate Locations</i></p>	<p><a href="#">Filming in the SLRD   Squamish-Lillooet Regional District</a></p>

## Blackcomb Glacier

<p><i>Location:</i></p>	<p>128km from Vancouver</p>	
<p><i>Park Contact:</i></p>	<p>Area Supervisor: Kevin Wagner</p>	<p>Email: kevin.wagner@gov.bc.ca Phone: (778) 947-0284</p>
<p><i>Accessible Features:</i></p>	<ul style="list-style-type: none"> <li>• Glaciers</li> <li>• Trails</li> </ul>	<ul style="list-style-type: none"> <li>• Mountain backdrop</li> </ul>
<p><i>Services and Facilities:</i></p>	<ul style="list-style-type: none"> <li>• Nearby towns</li> </ul>	<ul style="list-style-type: none"> <li>• Whistler Village</li> </ul>
<p><i>Important Dates</i></p> <p>- <i>Special Conditions and Closures</i></p>	<p><b>Year round:</b> No filming on weekends or holidays.</p> <p><b>May 15<sup>th</sup> to October 15<sup>th</sup>:</b> BC Parks will require conditions to filming activities that may limit the viability filming in this park in order to ensure public access and to maintain the park experience. Conditions can restrict the number of vehicles, cast and crew allowed on site, use of non- <a href="#">hand held equipment</a>, <a href="#">prohibit closures to roads and trails</a>, <a href="#">limit or prohibit special effects</a>, etc.</p>	
<p><i>Restrictions and Conditions</i></p>	<p><b>July 1<sup>st</sup> to September 15<sup>th</sup>:</b> Seasonal filming restriction due to high public use in a confined park area.</p> <ul style="list-style-type: none"> <li>• All filming applicants must consult with the BC Parks Area Supervisor to assess the viability of proposed filming activities. Applicants may be assigned to work with a contractor, referred to as a Film Permit Liaison, to complete their application. The applicant will be invoiced</li> </ul>	

<i>Alternate Locations</i>	<p>by BC Parks for the Film Permit Liaison's time.</p> <ul style="list-style-type: none"> <li>• This park is adjacent to the Blackcomb ski area. All filming applicants must consult with the Whistler/Blackcomb Resort to assess the viability of proposed filming activities.</li> <li>• There are voluntary over-flight restrictions and copies are available upon request.</li> <li>• Non-mechanized, walk-in/ski access.</li> <li>• The majority of film productions located on edge of or just outside the park at the "Wind lip" area southeast of the Horstman T-bar (detailed map available).</li> <li>• Contact <a href="#">Blackcomb Mountain administration</a> in Whistler for access information and mechanized access support through the resort's controlled recreation area to the park.</li> </ul> <p>Whistler Mountain ski area and the Pemberton Icecap.  <a href="#">Filming in Whistler   Resort Municipality of Whistler</a></p>
----------------------------	---

## Brandywine Falls

<i>Location:</i>	108km from Vancouver	
<i>Park Contact:</i>	Area Supervisor: Megan Kobitzsch	Email: <a href="mailto:Megan.Kobitzsch@gov.bc.ca">Megan.Kobitzsch@gov.bc.ca</a> Phone: 604 815-8419
<i>Accessible Features:</i>	<ul style="list-style-type: none"> <li>• <b>Special Feature:</b> <ul style="list-style-type: none"> <li>• Waterfalls</li> <li>• Trails</li> </ul> </li> <li>• Basalt columns</li> <li>• Forest</li> <li>• Lakes</li> </ul>	
<i>Services and Facilities:</i>	<ul style="list-style-type: none"> <li>• Picnic Area</li> <li>• Unit parking (limited to allow public use)</li> <li>• Pit toilets</li> </ul>	
<i>Important Dates</i> - <i>Special Conditions and Closures</i>	<p><b>Year round:</b> No filming on weekends or holidays. No filming activity in the Brandywine River above the falls or in the canyon below due to safety and environmental protection concerns</p> <p><b>May 15<sup>th</sup> to October 15<sup>th</sup>:</b> BC Parks will require conditions to film activities that may limit the viability of filming in this park in order to ensure public access and to maintain the park experience. Conditions can restrict the number of vehicles, cast and crew allowed on site, use of non- handheld equipment, prohibit closures to roads and trails, limit or prohibit special effects, etc.</p> <p><b>June 15 to September 15:</b> Seasonal filming restriction due to high public use in a confined park area.</p>	
<i>Restrictions and Conditions</i>	<ul style="list-style-type: none"> <li>• This park is operated and by a Park Operator. All filming applicants must consult with the Park Operator to assess the viability of proposed filming activities.</li> </ul>	



<p><i>Alternate Locations</i></p>	<ul style="list-style-type: none"> <li>• This is a very busy park from the May long weekend until the Thanksgiving long weekend. Filming opportunities are limited during that time. BC Parks will require conditions to film activities that may limit the viability of filming in this park in order to ensure public access and to maintain the park experience.</li> <li>• All filming applicants must consult with the BC Parks Area Supervisor to assess the viability of proposed filming activities. Applicants may be assigned to work with a contractor, referred to as a Film Permit Liaison, to complete their application. The applicant will be invoiced by BC Parks for the Film Permit Liaison’s time.</li> <li>• No filming activity in the Brandywine River above the falls or in the canyon below due to safety and environmental protection concerns.</li> <li>• Due to limitations of park sewage treatment capacity, the production company shall provide temporary sanitary facilities (port-a-potties).</li> <li>• There are occupancy, size and load limitations of the covered footbridge and the viewing platforms.</li> <li>• BC Parks do not allow the use of drones in the Brandywine Falls area between April and August. This is primarily for the protection of blue-listed species and nesting grounds, and other sensitive conservation values.</li> <li>• No filming in the winter due to access road being closed and not being plowed/maintained.</li> </ul>
	<p>Alexander Falls (Callaghan Valley), Keyhole Falls (north of Pemberton), waterfalls in the Fraser Valley; Powerhouse Falls on the Mamquam River (near Squamish).</p> <p><a href="#">Filming in Squamish - District of Squamish - Hardwired for Adventure Licenses and permits: Village of Pemberton</a></p>

### Callaghan Lake

<p><i>Location:</i></p>	<p>130km from Vancouver</p>	
<p><i>Park Contact:</i></p>	<p>Area Supervisor: Megan Kobitzsch</p>	<p>Email: <a href="mailto:Megan.Kobitzsch@gov.bc.ca">Megan.Kobitzsch@gov.bc.ca</a> Phone: 604 815-8419</p>
<p><i>Accessible Features:</i></p>	<ul style="list-style-type: none"> <li>• Glacier backdrop</li> <li>• Forest</li> <li>• Mountain backdrop</li> <li>• Lake</li> </ul>	
<p><i>Services and Facilities:</i></p>	<ul style="list-style-type: none"> <li>• Unit parking/staging is limited to a very small (3 vehicle) parking lot adjacent to the boat launch.</li> <li>• Public access to the day use area and parking lot must be maintained.</li> <li>• The size of this area is being reduced to promote re-vegetation</li> </ul>	

<p><i>Important Dates</i></p> <ul style="list-style-type: none"> <li>- <i>Special Conditions and Closures</i></li> </ul> <p><i>Restrictions and Conditions</i></p> <p><i>Alternate Locations</i></p>	<p>of this disturbed area.</p> <p><b>July 1 to Labour Day:</b> This is a very busy Park from July 1<sup>st</sup> until the September long weekend. Filming opportunities are limited during that time.</p> <ul style="list-style-type: none"> <li>• This park has unique and sensitive Park values. Filming opportunities are limited in this park to ensure the protection of park values.</li> <li>• All filming applicants must consult with the BC Parks Area Supervisor to assess the viability of proposed filming activities. Applicants may be assigned to work with a contractor, referred to as a Film Permit Liaison, to complete their application. The applicant will be invoiced by BC Parks for the Film Permit Liaison's time.</li> <li>• No Helicopters or unmanned aerial vehicle (UAV – i.e., drone) use allowed. This is in order to protect sensitive conservation values.</li> <li>• This site only has enough room for a minor and very small major filming operation.</li> <li>• No filming in winter due to access road not being plowed/maintained.</li> </ul> <p>Alexander Falls (Callaghan Valley), Keyhole Falls (north of Pemberton), waterfalls in the Fraser Valley; Powerhouse Falls on the Mamquam River (near Squamish).</p>
--	---

## Desolation Sound

<i>Location:</i>	142km from Vancouver	
<i>Park Contact:</i>	Area Supervisor: Rod Dalziel	Email: rod.dalziel@gov.bc.ca Phone: (604) 885-6755 Mobile: (604) 741-1967
<i>Accessible Features:</i>	<ul style="list-style-type: none"> <li>• <b>Special Feature:</b> Harbours</li> <li>• <b>Special Feature:</b> Malaspina Inlet and Homfray Channel</li> <li>• Trails</li> </ul>	<ul style="list-style-type: none"> <li>• Bays and coves</li> <li>• Coastline</li> <li>• Lakes</li> </ul>
<i>Services and Facilities:</i>	<ul style="list-style-type: none"> <li>• Camping</li> </ul>	<ul style="list-style-type: none"> <li>• Pit toilets (portable toilets also required)</li> </ul>

<p><b>Important Dates</b></p> <ul style="list-style-type: none"> <li>- <i>Special Conditions and Closures</i></li> </ul> <p><b>Restrictions and Conditions</b></p>	<p><b>July 1st to September 15:</b> High season for visitor use. Filming restrictions may apply. For further information regarding filming in this park please call the Area Supervisor.</p> <ul style="list-style-type: none"> <li>• This park has unique and sensitive Park values. Filming opportunities are limited in this park to ensure the protection of park values.</li> <li>• All filming applicants must consult with the BC Parks Area Supervisor to assess the viability of proposed filming activities. Applicants may be assigned to work with a contractor, referred to as a Film Permit Liaison, to complete their application. The applicant will be invoiced by BC Parks for the Film Permit Liaison's time.</li> <li>• Filming is generally limited to the designated camping areas.</li> <li>• The applicant may be required to conduct an archaeology assessment prior to initiating filming set up.</li> <li>• Restrictions on filming in the sensitive intertidal zone.</li> <li>• All filming applicants for the northern Sunshine Coast parks must engage in meaningful consultation with the Sliammon First Nation. Please contact the Sliammon First Nation <a href="#">Craig Galligos</a>.</li> </ul>
--	---

**Duffey Lake**

<p><b>Location:</b></p>	<p>200km from Vancouver</p>	
<p><b>Park Contact:</b></p>	<p>Area Supervisor: Kevin Wagner</p>	<p>Email: kevin.wagner@gov.bc.ca Phone: (778) 947-0284</p>
<p><b>Accessible Features:</b></p>	<ul style="list-style-type: none"> <li>• Glacier backdrop</li> <li>• Mountain backdrop</li> <li>• Lake</li> <li>• Forest</li> </ul>	
<p><b>Services and Facilities:</b></p>	<ul style="list-style-type: none"> <li>• Unit parking/staging is limited to the open gravel area at the west end of the park, adjacent to Highway 99. The size of this area is being reduced to promote re-vegetation of this disturbed area.</li> </ul>	
<p><b>Important Dates</b></p> <ul style="list-style-type: none"> <li>- <i>Special Conditions and Closures</i></li> </ul>	<p><b>July 1 to Labour Day:</b> This is a very busy Park from July 1<sup>st</sup> until the September long weekend. Filming opportunities are limited during that time.</p>	
<p><b>Restrictions and Conditions</b></p>	<ul style="list-style-type: none"> <li>• This park has unique and sensitive Park values. Filming opportunities are limited in this park to ensure the protection of park values.</li> </ul>	

<p><i>Alternate Locations</i></p>	<ul style="list-style-type: none"> <li>• All filming applicants must consult with the BC Parks Area Supervisor to assess the viability of proposed filming activities. Applicants may be assigned to work with a contractor, referred to as a Film Permit Liaison, to complete their application. The applicant will be invoiced by BC Parks for the Film Permit Liaison's time.</li> <li>• Helicopter filming activities, particularly in winter, are restricted to avoid disturbance of mountain goats in the park. There is a 2.0 km no-fly zone adjacent to goat habitat on the north side of the lake. Only a narrow corridor along the highway will be considered.</li> <li>• Approvals to use the park are often conditional to approvals from the Ministry of Transportation.</li> <li>• This site only has enough room for a minor/very small major filming operation.</li> <li>• All filming is subject to joint approval from the Ministry of Transportation and Infrastructure due to the immediate Highway 99 vehicle traffic and public safety concerns.</li> <li>• No Helicopters or unmanned aerial vehicle (UAV – i.e., drone) use allowed. This is in order to protect sensitive conservation values.</li> <li>• No filming in the winter due to avalanche risks in the immediate vicinity.</li> </ul> <p>Highway 99 corridor outside of the park, Lillooet Lake, Squamish Valley.</p> <p><a href="#">Village of Pemberton filming</a></p>
-----------------------------------	--

## Garibaldi

<p><i>Location:</i></p>	<p>101km from Vancouver – no vehicle access, hike in only</p>
<p><i>Park Contacts:</i></p>	<p>Garibaldi North (Whistler/Blackcomb: Singing Pass, Russet Lake, Spearhead Area, Wedgemount Lake)</p> <p>Area Supervisor: Kevin Wagner                      Email: <a href="mailto:Kevin.Wagner@gov.bc.ca">Kevin.Wagner@gov.bc.ca</a>  Phone: (778) 947-0284</p> <p>Garibaldi South (Garibaldi Lake, Taylor Meadows, Black Tusk/Panorama Ridge, Helm Creek, Cheakamus Lake/Singing Creek, Diamond Head: Elfin Lakes, Red Heather, Rampart Ponds)</p> <p>Area Supervisor: Erik Smeets                      Email: <a href="mailto:Erik.Smeets@gov.bc.ca">Erik.Smeets@gov.bc.ca</a>  Phone: (778) 266-1273</p>

<p><i>Accessible Features:</i></p>	<ul style="list-style-type: none"> <li>• Glaciers</li> <li>• Trails</li> <li>• Lakes</li> <li>• Mountains</li> </ul>
<p><i>Services and Facilities:</i></p> <p><i>Important Dates</i></p> <p>- <i>Special Conditions and Closures</i></p>	<ul style="list-style-type: none"> <li>• Picnic Areas</li> <li>• Camping</li> <li>• Pit toilets</li> <li>• Cabins</li> </ul> <p><b>Year round:</b> No filming on weekends or holidays. Filming will not be approved in some areas due to environmental considerations to protect habitat such as winter goat range and wolverine habitat.</p> <p><b>June 15th to October 15<sup>th</sup>:</b> BC Parks will require conditions to filming activities that may limit the viability filming in this park in order to ensure public access and to maintain the park experience. No filming near the Garibaldi Lake campground, Taylor Meadows campground, Elfin Lakes campground or Elfin Shelter.</p>
<p><i>Restrictions and Conditions</i></p>	<ul style="list-style-type: none"> <li>• This park has unique and sensitive Park values. All filming applicants must consult with the BC Parks Area Supervisor to assess the viability of proposed filming activities. Applicants may be assigned to work with a contractor, referred to as a Film Permit Liaison, to complete their application. The applicant will be invoiced by BC Parks for the Film Permit Liaison’s time.</li> <li>• Filming opportunities are limited in this park to ensure the protection of park values.</li> <li>• This is a very busy Park from June 15<sup>th</sup> until the Thanksgiving long weekend. Filming opportunities are limited during that time. BC Parks will require conditions to film activities that may limit the viability of filming in this park in order to ensure public access and to maintain the park experience.</li> <li>• There are voluntary over-flight restrictions and copies available upon request to film applicants.</li> <li>• No Helicopters or unmanned aerial vehicle (UAV – i.e., drone) use allowed. This is in order to protect sensitive conservation values.</li> <li>• No aircraft landings.</li> <li>• Non-mechanized, walk-in access only.</li> </ul>
<p><i>Alternate Locations</i></p>	<p>Blackcomb and Whistler Mountain ski resorts, the Pemberton Icecap, Brew Lake, Conflict Lake, Mt. Currie alpine area, Owl/Tenquille Lakes alpine area, Lizzie Lake alpine area.</p>

## Inland Lake

<b>Location:</b>	<i>179km from Vancouver</i>	
<b>Park Contact:</b>	Area Supervisor: Rod Dalziel	Email: rod.dalziel@gov.bc.ca Phone: (604) 885-6755 Mobile: (604) 741-1967
<b>Accessible Features:</b>	<ul style="list-style-type: none"> <li>• Forest</li> <li>• Trails</li> </ul>	<ul style="list-style-type: none"> <li>• Lake</li> </ul>
<b>Services and Facilities:</b>	<ul style="list-style-type: none"> <li>• Picnic Areas</li> <li>• Camping/Vehicle access</li> </ul>	<ul style="list-style-type: none"> <li>• Pit toilets</li> </ul>
<b>Important Dates</b> - <i>Special Conditions and Closures</i>	<b>July 1st to September 15:</b> BC Parks will require conditions to film activities that may limit the viability of filming in this park in order to ensure public access and to maintain the park experience.	
<b>Restrictions and Conditions</b>	<ul style="list-style-type: none"> <li>• This park is operated and by a Park Operator. All filming applicants must consult with the Park Operator to assess the viability of proposed filming activities.</li> <li>• All filming applicants must consult with the BC Parks Area Supervisor to assess the viability of proposed filming activities. Applicants may be assigned to work with a contractor, referred to as a Film Permit Liaison, to complete their application. The applicant will be invoiced by BC Parks for the Film Permit Liaison's time.</li> <li>• All filming applicants for the northern Sunshine Coast parks must engage in meaningful consultation with the Sliammon First Nation. Please contact the Sliammon First Nation <a href="#">Craig Galligos</a>.</li> </ul>	

## Joffre Lakes

<b>Location:</b>	<i>175km from Vancouver</i>	
<b>Park Contact:</b>	Area Supervisor: Kevin Wagner	Email: kevin.wagner@gov.bc.ca Phone: (778) 947-0284
<b>Accessible Features:</b>	<ul style="list-style-type: none"> <li>• Glacier backdrop</li> <li>• Mountain backdrop</li> <li>• Trails</li> </ul>	<ul style="list-style-type: none"> <li>• Lake</li> <li>• Valleys</li> <li>• Forest</li> </ul>
<b>Services and Facilities:</b>	<ul style="list-style-type: none"> <li>• Camping</li> </ul>	<ul style="list-style-type: none"> <li>• Pit toilets</li> </ul>

<p><i>Important Dates</i></p> <ul style="list-style-type: none"> <li>- <i>Special Conditions and Closures</i></li> </ul> <p><i>Restrictions and Conditions</i></p>	<p><b>July 1 to Labour Day:</b> This is a very busy Park from July 1<sup>st</sup> until the September long weekend. Filming opportunities are limited during that time.</p>
<p><i>Alternate Locations</i></p>	<ul style="list-style-type: none"> <li>• This park has unique and sensitive Park values. Filming opportunities are limited in this park to ensure the protection of park values.</li> <li>• All filming applicants must consult with the BC Parks Area Supervisor to assess the viability of proposed filming activities. Applicants may be assigned to work with a contractor, referred to as a Film Permit Liaison, to complete their application. The applicant will be invoiced by BC Parks for the Film Permit Liaison's time.</li> <li>• Lower Joffre Lake viewing area is closed to filming until facilities are improved to maintain environmental impact created by high public use.</li> <li>• Lakeshore filming will not be permitted in undeveloped natural areas due to sensitive aquatic and terrestrial ecosystems.</li> <li>• Small unit/minor shoot potential only.</li> <li>• No Helicopters or unmanned aerial vehicle (UAV – i.e., drone) use allowed. This is in order to protect sensitive conservation values.</li> </ul> <p>Numerous alpine lakes in the Cayoosh Mountain Range, Owl/Tenquille Lakes alpine area, Lizzie Lake alpine area.</p> <p><a href="#">Licences and permits: Village of Pemberton</a></p>

Murrin

<p><i>Location:</i></p>	<p>57.3km from Vancouver</p>	
<p><i>Park Contact:</i></p>	<p>Area Supervisor: Megan Kobitzsch</p>	<p>Email: <a href="mailto:Megan.Kobitzsch@gov.bc.ca">Megan.Kobitzsch@gov.bc.ca</a> Phone: 604 815-8419</p>
<p><i>Accessible Features:</i></p>	<ul style="list-style-type: none"> <li>• <b>Special Feature:</b> Cliffs</li> <li>• Beach</li> <li>• Trails</li> <li>• Grassy area</li> <li>• Lake</li> </ul>	
<p><i>Services and Facilities:</i></p>	<ul style="list-style-type: none"> <li>• Picnic Areas</li> <li>• Pit toilets</li> </ul>	
<p><i>Important Dates</i></p>	<p><b>Year round:</b> No filming on weekends or holidays</p>	

<p>- <i>Special Conditions and Closures</i></p>	<p><b>May 15<sup>th</sup> to October 15<sup>th</sup>:</b> BC Parks will require conditions to film activities that may limit the viability of filming in this park in order to ensure public access and to maintain the park experience. No filming is permitted near facilities, in the bouldering area, or in the parking lots.</p>
<p><i>Restrictions and Conditions</i></p>	<p><b>July 1<sup>st</sup> to September 7<sup>th</sup>:</b> Park is closed to filming.</p> <ul style="list-style-type: none"> <li>All filming applicants must consult with the BC Parks Area Supervisor to assess the viability of proposed filming activities. Applicants may be assigned to work with a contractor, referred to as a Film Permit Liaison, to complete their application. The applicant will be invoiced by BC Parks for the Film Permit Liaison's time.</li> <li>Vehicle access to the lake is very restricted. Small pick-up trucks in one area only.</li> <li>Limited parking space may limit filming activities.</li> <li>All film production activities will be confined to developed areas (trails/roads, lawns, parking lots). Filming access beyond access trails, roads, and lawns will not be approved.</li> </ul>
<p><i>Alternate Locations</i></p>	<p>Squamish: Smoke Bluffs, Malamute Bluffs, Cheakamus Canyon/Cullition Creek; Whistler: Soo Bluffs; numerous corridors climbing guidebooks available in local bookstores.</p> <p><a href="#">Filming in Squamish - District of Squamish - Hardwired for Adventure</a>  <a href="#">Filming in Whistler   Resort Municipality of Whistler</a></p>

Nairn Falls

<p><i>Location:</i></p>	<p>154km from Vancouver</p>	
<p><i>Park Contact:</i></p>	<p>Area Supervisor: Kevin Wagner</p>	<p>Email: kevin.wagner@gov.bc.ca Phone: (778) 947-0284</p>
<p><i>Accessible Features:</i></p>	<ul style="list-style-type: none"> <li><b>Special Feature:</b> <ul style="list-style-type: none"> <li>Waterfalls</li> <li>Trails</li> </ul> </li> <li>Forest</li> <li>River</li> </ul>	
<p><i>Services and Facilities:</i></p>	<ul style="list-style-type: none"> <li>Picnic Areas</li> <li>Camping/Vehicle access</li> <li>Pit toilets</li> </ul>	
<p><i>Important Dates</i> - <i>Special Conditions</i></p>	<p><b>October 1 to April 30:</b> Filming will not be approved due to severe mountain weather conditions which create safety issues and filming delays, and to wildlife concerns (bald eagles, goats, wolverine).</p>	



<p><i>and Closures</i></p> <p><b>Restrictions and Conditions</b></p>	<ul style="list-style-type: none"> <li>• This park is operated and by a Park Operator. All filming applicants must consult with the Park Operator to assess the viability of proposed filming activities.</li> <li>• This is a very busy Park from July 1<sup>st</sup> until the September long weekend. Filming opportunities are limited during that time.</li> <li>• All filming applicants must consult with the BC Parks Area Supervisor to assess the viability of proposed filming activities. Applicants may be assigned to work with a contractor, referred to as a Film Permit Liaison, to complete their application. The applicant will be invoiced by BC Parks for the Film Permit Liaison's time.</li> <li>• No Helicopters or unmanned aerial vehicle (UAV – i.e., drone) use allowed. This is in order to protect sensitive conservation values.</li> <li>• Winter filming may be very limited due to a small parking lot capacity and to accommodate other Pemberton Community partnerships.</li> </ul>
<p><i>Alternate Locations</i></p>	<p>Britannia Area: Beth Lake, Upper Britannia Creek, Sky Pilot Area; Squamish area: Alec and Echo Lakes, Seagram Lakes, Tricouni Lake, Brew Lake, Upper Ashlu/Squamish/Elaho valleys and mountains.</p>
	<p><a href="#">Filming in Squamish - District of Squamish - Hardwired for Adventure</a></p>

## Porpoise Bay

<p><b>Location:</b></p>	<p>71.5km from Vancouver – 40-minute ferry from West Vancouver</p>	
<p><b>Park Contact:</b></p>	<p>Area Supervisor: Rod Dalziel</p>	<p>Email: rod.dalziel@gov.bc.ca Phone: (604) 885-6755 Mobile: (604) 741-1967</p>
<p><i>Accessible Features:</i></p>	<ul style="list-style-type: none"> <li>• <b>Special Feature:</b> Views of Sechelt Inlet</li> <li>• Forested campground</li> <li>• Large parking areas adjacent to beach and forested areas</li> </ul>	<ul style="list-style-type: none"> <li>• Forest</li> <li>• Grassy area</li> <li>• Sandy beach</li> <li>• Mountains</li> </ul>
<p><b>Services and Facilities:</b></p>	<ul style="list-style-type: none"> <li>• Picnic Areas</li> <li>• Road access with lots of parking</li> </ul>	<ul style="list-style-type: none"> <li>• Campgrounds/Vehicle access</li> </ul>
<p><i>Important Dates</i></p>	<p>This is a very busy Park from May 15<sup>th</sup> until the September long weekend. Filming opportunities are limited during that time</p>	

<p>- <i>Special Conditions and Closures</i></p> <p><b>Restrictions and Conditions</b></p>	<ul style="list-style-type: none"> <li>• This park has unique and sensitive Park Values. All filming applicants must consult with the BC Parks Area Supervisor to assess the viability of proposed filming activities. Applicants may be assigned to work with a contractor, referred to as a Film Permit Liaison, to complete their application. The applicant will be invoiced by BC Parks for the Film Permit Liaison’s time.</li> <li>• This park is operated and by a Park Operator. All filming applicants must consult with the Park Operator to assess the viability of proposed filming activities.</li> <li>• All filming applicants for filming the lower Sunshine Coast parks must engage in meaningful consultation with the Sechelt First Nations. Please contact Sechelt Indian Band prior to submitting a PUP application.</li> <li>• Some restrictions on filming on beach area close to the estuary.</li> </ul>
---	---

### Princess Louisa Marine

<b>Location:</b>	220km from Vancouver	
<b>Park Contact:</b>	Area Supervisor: Rod Dalziel	Email: rod.dalziel@gov.bc.ca Phone: (604) 885-6755 Mobile: (604) 741-1967
<b>Accessible Features:</b>	<ul style="list-style-type: none"> <li>• <b>Special Feature:</b> Waterfalls</li> <li>• Mountains</li> </ul>	<ul style="list-style-type: none"> <li>• Ocean</li> <li>• Steep granite faces</li> </ul>
<b>Services and Facilities:</b>	<ul style="list-style-type: none"> <li>• Picnic Areas</li> <li>• Camping</li> </ul>	<ul style="list-style-type: none"> <li>• Portable toilet will be required</li> </ul>
<b>Important Dates</b>	This is a very busy park from June 15 <sup>th</sup> to September 15 <sup>th</sup> . Filming opportunities are limited during that time.	
<p>- <i>Special Conditions and Closures</i></p> <p><b>Restrictions and Conditions</b></p>	<ul style="list-style-type: none"> <li>• All filming applicants must consult with the BC Parks Area Supervisor to assess the viability of proposed filming activities. Applicants may be assigned to work with a contractor, referred to as a Film Permit Liaison, to complete their application. The applicant will be invoiced by BC Parks for the Film Permit Liaison’s time.</li> </ul>	

	<ul style="list-style-type: none"> <li>• All filming applicants for filming the lower Sunshine Coast parks must engage in meaningful consultation with the Sechelt First Nations. Please contact Sechelt Indian Band prior to submitting a PUP application.</li> <li>• Water and flight access only.</li> <li>• Restrictions on working on beach areas.</li> <li>• Dock area is busy during peak season and public boats will take precedence over film</li> </ul>
--	--

**Roberts Creek**

<b>Location:</b> 61.4km from Vancouver	
<b>Park Contact:</b>	Area Supervisor: Rod Dalziel Email: rod.dalziel@gov.bc.ca Phone: (604) 885-6755 Mobile: (604) 741-1967
<b>Accessible Features:</b>	<ul style="list-style-type: none"> <li>• Cobblestone beach with view of Georgia Strait</li> <li>• Forest</li> <li>• Ocean</li> </ul>
<b>Services and Facilities:</b>	<ul style="list-style-type: none"> <li>• Picnic Areas</li> <li>• Pit toilets</li> <li>• Vehicle accessible camping</li> <li>• Road access</li> </ul>
<b>Restrictions and Conditions</b>	<ul style="list-style-type: none"> <li>• This park is operated and by a Park Operator. All filming applicants must consult with the Park Operator to assess the viability of proposed filming activities.</li> <li>• All filming applicants must consult with the BC Parks Area Supervisor to assess the viability of proposed filming activities. Applicants may be assigned to work with a contractor, referred to as a Film Permit Liaison, to complete their application. The applicant will be invoiced by BC Parks for the Film Permit Liaison's time.</li> <li>• All filming applicants for filming the lower Sunshine Coast parks must engage in meaningful consultation with the Sechelt First Nations. Please contact Sechelt Indian Band prior to submitting a PUP application.</li> </ul>

**Saltery Bay**

<b>Location:</b> 143km from Vancouver	
<b>Park Contact:</b>	Area Supervisor: Rod Dalziel Email: rod.dalziel@gov.bc.ca Phone: (604) 885-6755 Mobile: (604) 741-1967

<i>Accessible Features:</i>	<ul style="list-style-type: none"> <li>• Cobblestone beach with lots of driftwood</li> <li>• Trails</li> <li>• Steep granite faces</li> <li>• Ocean</li> </ul>
<i>Services and Facilities:</i>	<ul style="list-style-type: none"> <li>• Picnic Areas</li> <li>• Road access</li> <li>• Boat ramp</li> <li>• Pit toilets</li> <li>• Vehicle accessible camping</li> </ul>
<i>Restrictions and Conditions</i>	<ul style="list-style-type: none"> <li>• This park is operated and by a Park Operator. All filming applicants must consult with the Park Operator to assess the viability of proposed filming activities.</li> <li>• All filming applicants must consult with the BC Parks Area Supervisor to assess the viability of proposed filming activities. Applicants may be assigned to work with a contractor, referred to as a Film Permit Liaison, to complete their application. The applicant will be invoiced by BC Parks for the Film Permit Liaison's time.</li> <li>• All filming applicants for the northern Sunshine Coast parks must engage in meaningful consultation with the Sliammon First Nation. Please contact the Sliammon First Nation <a href="#">Craig Galligos</a>.</li> </ul>

## Sargeant Bay

<i>Location:</i>	82km from Vancouver	
<i>Park Contact:</i>	Area Supervisor: Rod Dalziel	Email: rod.dalziel@gov.bc.ca Phone: (604) 885-6755 Mobile: (604) 741-1967
<i>Accessible Features:</i>	<ul style="list-style-type: none"> <li>• Cobblestone beach with lots of driftwood</li> <li>• Beaver pond</li> <li>• Forest</li> <li>• Manmade berm</li> <li>• Trails</li> <li>• Ocean</li> </ul>	
<i>Services and Facilities:</i>	<ul style="list-style-type: none"> <li>• Picnic Areas</li> <li>• Road access (limited parking)</li> <li>• Pit toilets</li> <li>• Vehicle access</li> </ul>	
<i>Restrictions and Conditions</i>	<ul style="list-style-type: none"> <li>• All filming applicants must consult with the BC Parks Area Supervisor to assess the viability of proposed filming activities. Applicants may be assigned to work with a contractor, referred to as a Film Permit Liaison, to complete their application. The applicant will be invoiced by BC Parks for the Film Permit Liaison's time.</li> <li>• This park is operated and by a Park Operator. All filming applicants must consult with the Park Operator to assess the</li> </ul>	

<i>Alternate Locations</i>	<p>viability of proposed filming activities.</p> <ul style="list-style-type: none"> <li>All filming applicants for filming the lower Sunshine Coast parks must engage in meaningful consultation with the Sechelt First Nations. Please contact Sechelt Indian Band prior to submitting a PUP application.</li> </ul> <p><a href="#">Chilliwack Creative Commission - City of Chilliwack</a></p>
----------------------------	--

## Shannon Falls

<i>Location:</i>	<i>61km from Vancouver</i>	
<i>Park Contact:</i>	Area Supervisor: Megan Kobitzsch	Email: <a href="mailto:Megan.Kobitzsch@gov.bc.ca">Megan.Kobitzsch@gov.bc.ca</a> Phone: 604 815-8419
<i>Accessible Features:</i>	<ul style="list-style-type: none"> <li><b>Special Feature:</b> <ul style="list-style-type: none"> <li>Waterfalls</li> <li>Trails</li> <li>Large grassy areas</li> </ul> </li> <li>Cliffs</li> <li>Mountains</li> <li>Viewing platforms</li> </ul>	
<i>Services and Facilities:</i>	<ul style="list-style-type: none"> <li>Due to high use in peak periods, parking may not be available and alternate parking arrangements may need to be made</li> <li>Pit and flush toilets</li> <li>Picnic Areas</li> </ul>	
<i>Important Dates</i> - <i>Special Conditions and Closures</i>	<p><b>Year round:</b> No filming on weekends or holidays.</p> <p><b>May 15<sup>th</sup> to October 15<sup>th</sup>:</b> BC Parks will require conditions to film activities that may limit the viability of filming in this park in order to ensure public access and to maintain the park experience. No filming near facilities, on the viewing platform, in the parking lots.</p> <p><b>October 1 to April 30:</b> Filming will not be approved in some areas due to environmental considerations.</p>	
<i>Restrictions and Conditions</i>	<ul style="list-style-type: none"> <li>This is a very busy park from the May long weekend until the Thanksgiving long weekend. Filming opportunities are limited during that time. BC Parks will require conditions to film activities that may limit the viability of filming in this park in order to ensure public access and to maintain the park experience.</li> <li>This park is operated and by a Park Operator. All filming applicants must consult with the Park Operator to assess the viability of proposed filming activities.</li> <li>All filming applicants must consult with the BC Parks Area</li> </ul>	

	<p>Supervisor to assess the viability of proposed filming activities. Applicants may be assigned to work with a contractor, referred to as a Film Permit Liaison, to complete their application. The applicant will be invoiced by BC Parks for the Film Permit Liaison's time.</p> <ul style="list-style-type: none"> <li>• A re-vegetation plan to allow naturalization of many landscaped areas and to encourage recovery of areas disturbed by human use is now in effect for this park. Consequently, all film production activities will be confined to developed areas (trails/roads, lawns, parking lots). Filming access beyond fencing, particularly along the base of the waterfalls, will not be approved. Filming in the creek or on logs over the creek will not be approved.</li> <li>• Shuttle vans in the park are discouraged - crew and cast are expected to walk between the parking area and shoot locations.</li> <li>• Due to limitations of park sewage treatment capacity, the production company shall provide temporary sanitary facilities (port-a-potties).</li> <li>• Occupancy and access to the waterfall viewing platform may be limited and time constrained.</li> <li>• Reservations for large group functions (i.e.: company picnics) may occupy the upper, large grass area and will have precedence over commercial filming.</li> </ul>
<p><i>Alternate Locations</i></p>	<p>Alexander Falls (Callaghan valley), Powerhouse Falls on the lower Mamquam River (road accessible, bridge directly over falls, Squamish), three waterfalls behind Furry Creek golf course club house, waterfalls in Fraser valley, hundreds of similar looking mountain streams throughout southwest BC.</p> <p><a href="#">Filming in Squamish - District of Squamish - Hardwired for Adventure</a></p>

Skookumchuck Narrows

<p><i>Location:</i></p>	<p>130km from Vancouver</p>	
<p><i>Park Contact:</i></p>	<p>Area Supervisor: Rod Dalziel</p>	<p>Email: rod.dalziel@gov.bc.ca Phone: (604) 885-6755 Mobile: (604) 741-1967</p>
<p><i>Accessible Features:</i></p>	<ul style="list-style-type: none"> <li>• <b>Special Feature:</b> Tidal rapids</li> <li>• Forest</li> <li>• Lake</li> </ul>	

<i>Services and Facilities:</i>	<ul style="list-style-type: none"> <li>• Picnic Areas</li> <li>• Road access</li> <li>• Pit toilets (portable toilet will also be required)</li> </ul>
<i>Restrictions and Conditions</i>	<ul style="list-style-type: none"> <li>• All filming applicants must consult with the BC Parks Area Supervisor to assess the viability of proposed filming activities. Applicants may be assigned to work with a contractor, referred to as a Film Permit Liaison, to complete their application. The applicant will be invoiced by BC Parks for the Film Permit Liaison's time.</li> <li>• Restrictions on working in the sensitive intertidal zone.</li> <li>• Limited working area at Roland Point.</li> <li>• Water and walk in access only.</li> <li>• Some restrictions during peak season from June 15<sup>th</sup> –Sept 15<sup>th</sup>.</li> <li>• Must have consultation with the Park Facility Operators.</li> <li>• All filming applicants for the lower Sunshine Coast parks must engage in meaningful consultation with the Sechelt First Nations. Please contact Sechelt Indian Band prior to submitting a PUP application.</li> </ul>

## Stawamus Chief

<i>Location:</i>	66.4km from Vancouver	
<i>Park Contact:</i>	Area Supervisor: Megan Kobitzsch	Email: <a href="mailto:Megan.Kobitzsch@gov.bc.ca">Megan.Kobitzsch@gov.bc.ca</a> Phone: 604 815-8419
<i>Accessible Features:</i>	<ul style="list-style-type: none"> <li>• <b>Special Feature:</b> Cliffs</li> <li>• Trails</li> <li>• Mountains</li> </ul>	
<i>Services and Facilities:</i>	<ul style="list-style-type: none"> <li>• Picnic Areas</li> <li>• Camping/vehicle access</li> <li>• Pit toilets</li> </ul>	
<i>Important Dates</i>	<b>Year round:</b> No filming on weekends or holidays	
<i>- Special Conditions and Closures</i>	<p><b>May 15<sup>th</sup> to October 15<sup>th</sup>:</b> BC Parks will require conditions to film activities that may limit the viability of filming in this park in order to ensure public access and to maintain the park experience. No filming is permitted near facilities, in the bouldering area, on the Chief Peaks Trail and peaks, or in the parking lots.</p> <p><b>March 15 to July 31 (annually):</b> Seasonal closures for filming are in effect in falcon activity areas (often the First Peak and adjacent rock walls) - Filming will not be permitted during this time.</p>	
<i>Restrictions and Conditions</i>	<ul style="list-style-type: none"> <li>• All filming applicants must consult with the BC Parks Area Supervisor to assess the viability of proposed filming activities. Applicants may be assigned to work with a</li> </ul>	

contractor, referred to as a Film Permit Liaison, to complete their application. The applicant will be invoiced by BC Parks for the Film Permit Liaison's time.

- This park has unique and sensitive Park values. Filming opportunities are limited in this park to ensure the protection of park values.
- This is a park with very high public use for day hiking (up to 50,000 visitors annually hike to the peaks) and internationally renowned rock climbing.
- This is a very busy Park from the May long weekend until the Thanksgiving long weekend. Filming opportunities are limited during that time. BC Parks will require conditions to film activities that may limit the viability of filming in this park in order to ensure public access and to maintain the park experience.
- This park is operated and by a Park Operator. All filming applicants must consult with the Park Operator to assess the viability of proposed filming activities.
- Large production unit parking and related filming activity adjacent to the highway and helicopter use above and immediately adjacent to the highway corridor flight space is discouraged due to the high traffic volume along the Sea-to-Sky Corridor and the related potential for traffic jams and accidents.
- Large film crews and related equipment and props on the summits will be discouraged. Crew sizes of 20 persons or less are preferred.
- There are no roads to the peaks!
- Park "rest windows" (multi-day breaks between film permits) may be unilaterally implemented by BC Parks.
- Expect requirements for constructing temporary elevated walkways, ladders and stairs and laying down carpeting and rubber matting to protect fragile vegetation.
- Expect helicopter flight corridor and operating time restrictions. Landing helicopters in the park parking lots is not possible due to the presence of power lines. Landings on the top of the Stawamus Chief may be permitted in designated areas on the Second Peak. Production assistants are required to hike up the backside trail and secure



<p><i>Alternate Locations</i></p>	<p>helicopter landing sites for public safety prior to helicopter activities.</p> <ul style="list-style-type: none"> <li>• Film production activities on the First Peak will be discouraged due to the high public use on the sloping, confined and exposed summit area.</li> <li>• Portable toilets will be required, including flying into pre-approved sites.</li> <li>• Peregrine falcons, an endangered (red-listed) species, reside, nest, and fly around the cliffs and will affect proposed filming, helicopter and climbing activities. Impact assessments may be required to ensure protection of these rare birds of prey.</li> </ul> <p><b>A rock-climbing strategy is in effect for the park:</b></p> <ul style="list-style-type: none"> <li>• Extreme sport competitions will not be permitted. All activities must be safe and adhere to the ethics of rock climbing.</li> <li>• Filming activities will be encouraged on rock climbing routes established by the rock-climbing community or at areas previously used for filming.</li> <li>• Film companies are strongly encouraged to hire local riggers, certified alpine climbing guides and local, high-angle cliff, search and rescue contractors who are intimately familiar with this area.</li> <li>• Where rock climbing related activities are planned, a written rescue plan will be required to be available at the Permit Area.</li> </ul>
	<p>Squamish: Smoke Bluffs, Malamute Bluffs, Cheakamus Canyon/Cullition Creek; Whistler: Soo Bluffs; numerous corridors climbing guidebooks available in local bookstores.</p> <p><a href="#">Filming in Squamish - District of Squamish - Hardwired for Adventure</a>  <a href="#">Filming in Whistler   Resort Municipality of Whistler</a></p>

Tantalus

<p><i>Location:</i></p>	<p>80km from Vancouver – fly in access only</p>	
<p><i>Park Contact:</i></p>	<p>Area Supervisor: Megan Kobitzsch</p>	<p>Email: <a href="mailto:Megan.Kobitzsch@gov.bc.ca">Megan.Kobitzsch@gov.bc.ca</a> Phone: 604 815-8419</p>
<p><i>Accessible Features:</i></p>	<ul style="list-style-type: none"> <li>• Alpine lake (Includes Lake Lovely Water Area)</li> <li>• Mountain backdrop</li> </ul>	

*Services and Facilities:*

- Trails
- Glacier backdrop
- Forest

*Important Dates*

- *Special Conditions and Closures*

**October 1 to April 30:** Filming will not be approved due to severe mountain weather conditions which create safety issues and filming delays, and to wildlife concerns (bald eagles, goats, wolverine).

*Restrictions and Conditions*

- This is a pristine wilderness area, and this park has unique and sensitive Park values. Filming opportunities are limited in this park to ensure the protection of park values.
- All filming applicants must consult with the BC Parks Area Supervisor to assess the viability of proposed filming activities. Applicants may be assigned to work with a contractor, referred to as a Film Permit Liaison, to complete their application. The applicant will be invoiced by BC Parks for the Film Permit Liaison's time.
- Aircraft must abide by the Tantalus Aviation Plan using designated landing zones.
- Catering facilities are not allowed.
- Unless proposed on snow or glacier areas, large crews will not be permitted.
- Portable toilets must be flown in.
- Financial guarantees will be a minimum of \$10,000.00.
- The use of limited recreation sites around Lake Lovely water cannot be guaranteed as there is no reservation system for this park. Public recreation use of these sites has priority over film production.
- Aircraft landings, via floatplane or helicopter, by carriers with existing ParkUse Permits are preferred and encouraged.

*Alternate Locations*

Britannia Area: Beth Lake, Upper Britannia Creek, Sky Pilot Area;  
Squamish area: Alec and Echo Lakes, Seagram Lakes, Tricouni Lake, Brew Lake, Upper Ashlu/Squamish/Elaho valleys and mountains.

[Filming in Squamish - District of Squamish - Hardwired for Adventure](#)

## West Coast

### South Island

All filming applicants must consult with the BC Parks Area Supervisor (see contact for Section Head below) to assess the viability of proposed filming activities prior to completing an application. Applicants may be assigned to work with a contractor, referred to as a Film Permit Liaison, to complete their application. The applicant will be invoiced by BC Parks for the Film Permit Liaison's time.

Sarah Joannis – Park and Protected Areas Section Head

[Sarah.joannis@gov.bc.ca](mailto:Sarah.joannis@gov.bc.ca)

(778) 974-2784

2930 Trans Canada Highway, Victoria, BC

V9B 6H6

Alternative commercial filming information can be found at:

[Greater Victoria Film Commission](#)

[Island North Film Commission](#)

### South Vancouver Island Parks – alphabetical

<a href="#"><u>Bamberton Park</u></a>	<a href="#"><u>Beaver Point Park</u></a>	<a href="#"><u>Bellhouse Park</u></a>	<a href="#"><u>Bodega Ridge Park</u></a>
<a href="#"><u>Burgoyne Bay Park</u></a>	<a href="#"><u>Carmanah Walbran Park</u></a>	<a href="#"><u>Chemainus River Park</u></a>	<a href="#"><u>Collinson Point Park</u></a>
<a href="#"><u>Cowichan River Park</u></a>	<a href="#"><u>Dionisio Point Park</u></a>	<a href="#"><u>Discovery Island Marine Park</u></a>	<a href="#"><u>Eves Park</u></a>
<a href="#"><u>French Beach Park</u></a>	<a href="#"><u>Goldstream Park</u></a>	<a href="#"><u>Gordon Bay Park</u></a>	<a href="#"><u>Gowlland Tod Park</u></a>
<a href="#"><u>Hitchie Creek Park</u></a>	<a href="#"><u>Hwsalu-utsum Park</u></a>	<a href="#"><u>Juan De Fuca Park</u></a>	<a href="#"><u>Koksilah River Park</u></a>
<a href="#"><u>ŁÁU.WELNEW (John Dean) Park</u></a>	<a href="#"><u>Memory Island Park</u></a>	<a href="#"><u>Montague Harbour Marine Park</u></a>	<a href="#"><u>Mount Erskine Park</u></a>
<a href="#"><u>Mount Maxwell Park</u></a>	<a href="#"><u>Nitinat River Park</u></a>	<a href="#"><u>Pirates Cove Marine Park</u></a>	<a href="#"><u>Ruckle Park</u></a>
<a href="#"><u>Sooke Mountain Park</u></a>	<a href="#"><u>Sooke Potholes Park</u></a>	<a href="#"><u>Spectacle Lake Park</u></a>	<a href="#"><u>Wakes Cove Park</u></a>
<a href="#"><u>Wallace Island Marine Park</u></a>	<a href="#"><u>West Shawnigan Lake Park</u></a>	<a href="#"><u>Whaleboat Island Marine Park</u></a>	

## Juan de Fuca Park

<i>Location:</i>	80km from Victoria	
<i>Park Contact:</i>	Area Supervisor: Owen Catherall	Email: <a href="mailto:Owen.Catherall@gov.bc.ca">Owen.Catherall@gov.bc.ca</a> Phone: (778) 974-2783
<i>Accessible Features:</i>	<ul style="list-style-type: none"> <li>• Beaches</li> <li>• Forest</li> </ul>	<ul style="list-style-type: none"> <li>• Trails</li> <li>• Campgrounds</li> </ul>
<i>Services and Facilities:</i>	<ul style="list-style-type: none"> <li>• Campground/Vehicle access</li> <li>• Picnic areas</li> </ul>	<ul style="list-style-type: none"> <li>• Pit toilets</li> </ul>
<i>Important Dates</i> - <i>Special Conditions and Closures</i>	<p><b>Year round:</b> No filming on weekends or holidays.</p> <p><b>July 1 to Labour Day:</b> Filming opportunities are limited due to high visitor use in the park. BC Parks will require conditions to film activities that may limit the viability of filming in this park in order to ensure public access and to maintain the park experience. Conditions can restrict the number of vehicles, cast and crew allowed on site, use of non-handheld equipment, prohibit closures to roads and trails, limit or prohibit special effects etc.</p>	
<i>Restrictions and Conditions</i>	<ul style="list-style-type: none"> <li>• This park has unique and sensitive Park values. All filming applicants must consult with the BC Parks Area Supervisor to assess the viability of proposed filming activities prior to submitting an application. Filming opportunities are limited in this park to ensure the protection of park values.</li> <li>• All filming applicants for filming along the Juan de Fuca Marine Trail and at Botanical Beach must engage in meaningful consultation with the Pacheedaht First Nation.</li> </ul>	
<i>Alternate Locations</i>	<p><a href="#">Vancouver Island South – Film and Media Commission (filmvictoria.com)</a></p> <p><a href="#">INFilm   Vancouver Island North Film Commission, BC, Canada</a></p>	

## Mid Island / Haida G'waii

All filming applicants must consult with the BC Parks Area Supervisor (see contact for Section Head below) to assess the viability of proposed filming activities prior to completing an application. Applicants may be assigned to work with a contractor, referred to as a Film Permit Liaison, to complete their application. The applicant will be invoiced by BC Parks for the Film Permit Liaison's time.

Christine Rikley – Park and Protected Areas Section Head

[christine.rikley@gov.bc.ca](mailto:christine.rikley@gov.bc.ca)

(778) 698-4263

2930 Trans Canada Hwy, Victoria, BC

V9B 6H6

Alternative commercial filming information can be found at:

[Greater Victoria Film Commission](#)

[Island North Film Commission](#)

### Mid Island / Haida G'waii Parks – alphabetical

<a href="#"><u>Arbutus Grove Park</u></a>	<a href="#"><u>Boyle Point Park (Protected Area)</u></a>	<a href="#"><u>Clayoquot Arm Park</u></a>	<a href="#"><u>Clayoquot Plateau Park</u></a>
<a href="#"><u>Dawley Passage Park</u></a>	<a href="#"><u>Denman Island Park (Protected Area)</u></a>	<a href="#"><u>Drumbeg Park</u></a>	<a href="#"><u>Englishman River Falls Park</u></a>
<a href="#"><u>Epper Passage Park</u></a>	<a href="#"><u>Fillongley Park</u></a>	<a href="#"><u>Flores Island Park</u></a>	<a href="#"><u>Fossli Park</u></a>
<a href="#"><u>Gabriola Sands Park</u></a>	<a href="#"><u>Gerald Island Park</u></a>	<a href="#"><u>Gibson Marine Park</u></a>	<a href="#"><u>Helliwell Park</u></a>
<a href="#"><u>Hemer Park</u></a>	<a href="#"><u>Hesquiat Lake Park</u></a>	<a href="#"><u>Hesquiat Peninsula Park</u></a>	<a href="#"><u>Kennedy Lake Park</u></a>
<a href="#"><u>Kennedy River Bog Park</u></a>	<a href="#"><u>Little Qualicum Falls Park</u></a>	<a href="#"><u>Macmillan Park</u></a>	<a href="#"><u>Maquinna Marine Park and Protected Area</u></a>
<a href="#"><u>Morden Colliery Historic Park</u></a>	<a href="#"><u>Mount Geoffery Escarpment Park</u></a>	<a href="#"><u>Naikoon Park</u></a>	<a href="#"><u>Petroglyph Park</u></a>
<a href="#"><u>Pure Lake Park</u></a>	<a href="#"><u>Rathrevor Beach Park</u></a>	<a href="#"><u>Roberts Memorial Park</u></a>	<a href="#"><u>Sandwell Park</u></a>
<a href="#"><u>Saysutshun (Newcastle Island Marine) Park</u></a>	<a href="#"><u>Sproat Lake Park</u></a>	<a href="#"><u>Stamp River Park</u></a>	<a href="#"><u>Sulphur Passage Park</u></a>
<a href="#"><u>Sydney Inlet Park</u></a>	<a href="#"><u>Taylor Arm Park</u></a>	<a href="#"><u>Tranquil Creek Park</u></a>	<a href="#"><u>Tribune Bay Park</u></a>
<a href="#"><u>Vargas Island Park</u></a>			

Mid Island / Haida G'waii Conservancies – alphabetical

<a href="#"><u>Daawuuxusda Conservancy</u></a>	<a href="#"><u>Damaxyaa Conservancy</u></a>	<a href="#"><u>Duu Guusd Conservancy</u></a>	<a href="#"><u>K'uuna Gwaay Conservancy</u></a>
<a href="#"><u>Kamdis Conservancy</u></a>	<a href="#"><u>Kunxalas Conservancy</u></a>	<a href="#"><u>Nang Xaldangaas Conservancy</u></a>	<a href="#"><u>SGaay Taw Siiwaay K?adjuu Conservancy</u></a>
<a href="#"><u>Tlall Conservancy</u></a>	<a href="#"><u>Yaaguun Gandlaay Conservancy</u></a>	<a href="#"><u>Yaaguun Suu Conservancy</u></a>	

MacMillan Park (Cathedral Grove)

<i>Location:</i>	66km from Nanaimo		
<i>Park Contact:</i>	Area Supervisor: Brad Lapham	Email: bradley.lapham@gov.bc.ca Phone: (250) 739-8190	
<i>Accessible Features:</i>	<ul style="list-style-type: none"> <li>• <b>Special Feature:</b> Old-growth Forest</li> <li>• Lake</li> </ul>		
<i>Services and Facilities:</i>	<ul style="list-style-type: none"> <li>• Trails</li> <li>• Pit toilets</li> </ul>		
<i>Important Dates</i> - <i>Special Conditions and Closures</i>	<p><b>May 15 to September 15:</b> No commercial filming is typically allowed within MacMillan Park (Cathedral Grove) between the dates of May 15 through September 15. Filming in the park presents public safety risks related to the volume of park visitors and traffic flow on the adjacent highway during this time.</p>		
<i>Restrictions and Conditions</i>	<ul style="list-style-type: none"> <li>• This park has unique and sensitive Park values. All filming applicants must consult with the BC Parks Area Supervisor to assess the viability of proposed filming activities prior to submitting an application. Filming opportunities are limited in this park to ensure the protection of park values.</li> <li>• Approvals to use the park are often conditional to approvals from the Ministry of Transportation.</li> </ul>		
<i>Alternate Locations</i>	<p><a href="#">Vancouver Island South – Film and Media Commission (filmvictoria.com)</a> <a href="#">INFilm   Vancouver Island North Film Commission, BC, Canada</a></p>		

## Vargas Island Park

<i>Location:</i>	200km from Nanaimo	
<i>Park Contact:</i>	Area Supervisor: Michael Grandbois	Email: Michael.grandbois@gov.bc.ca Phone: (250) 736-6816
<i>Accessible Features:</i>	<ul style="list-style-type: none"> <li>• Beach</li> </ul>	<ul style="list-style-type: none"> <li>• Forests</li> </ul>
<i>Services and Facilities:</i>	<ul style="list-style-type: none"> <li>• Boat or air access</li> </ul>	<ul style="list-style-type: none"> <li>• Pit toilets</li> </ul>
<i>Important Dates</i> - <i>Special Conditions and Closures</i>	<p><b>Year round:</b> Filming of wildlife, particularly coastal wolves, is not allowed within Vargas Island Park at any time of year. Habituation of the wolves on Vargas Island to human presence is a major concern and any time that a wolf is spotted it must be scared away immediately, which makes most wildlife photography unviable within the park.</p>	
<i>Restrictions and Conditions</i>	<ul style="list-style-type: none"> <li>• This park has unique and sensitive Park values. All filming applicants must consult with the BC Parks Area Supervisor to assess the viability of proposed filming activities prior to submitting an application. Filming opportunities are limited in this park to ensure the protection of park values.</li> <li>• All filming applicants should contact the <a href="#">Ahousat First Nation</a> to discuss the proposed filming activities prior to submitting an application.</li> </ul>	
<i>Alternate Locations</i>	Other islands in Clayoquot Sound	

## North Island / Central Coast

All filming applicants must consult with the BC Parks Area Supervisor (see contact for Section Head below) to assess the viability of proposed filming activities prior to completing an application. Applicants may be assigned to work with a contractor, referred to as a Film Permit Liaison, to complete their application. The applicant will be invoiced by BC Parks for the Film Permit Liaison's time.

Aaron Miller – Park and Protected Areas Section Head

[aaron.miller@gov.bc.ca](mailto:aaron.miller@gov.bc.ca)

(250) 331-9955

1812 Miracle Beach Road, Black Creek, BC

V9J 1K1

Alternative commercial filming information can be found at:

[Greater Victoria Film Commission](#)

[Island North Film Commission](#)

### North Island / Central Coast Parks – alphabetical

<a href="#">Allison Harbour Marine Park</a>	<a href="#">Artlish Caves Park</a>	<a href="#">Big Bunsby Marine Park</a>	<a href="#">Bligh Island Marine Park</a>
<a href="#">Broughton Archipelago Park</a>	<a href="#">Cape Scott Park</a>	<a href="#">Catala Island Marine Park</a>	<a href="#">Claud Elliott Lake Park</a>
<a href="#">Cormorant Channel Marine Park</a>	<a href="#">Dixie Cove Marine Park</a>	<a href="#">Echo Bay Marine Park</a>	<a href="#">Elk Falls Park (Protected Area)</a>
<a href="#">God's Pocket Marine Park</a>	<a href="#">Gold Muchalat Park</a>	<a href="#">Hisnit River Watershed Protected Area</a>	<a href="#">Horne Lake Caves Park</a>
<a href="#">Háthayim (Von Donop) Marine Park</a>	<a href="#">Jedediah Island Marine Park</a>	<a href="#">JÁJÍ7EM and KW'ULH (Sandy Island) Marine Park</a>	<a href="#">Kin Beach Park</a>
<a href="#">Kitty Coleman Beach Park</a>	<a href="#">Lanz and Cox Islands Park</a>	<a href="#">Lawn Point Park</a>	<a href="#">Loveland Bay Park</a>
<a href="#">Lower Nimpkish Park</a>	<a href="#">Lower Tsitika River Park</a>	<a href="#">Main Lake Park</a>	<a href="#">Mansons Landing Park</a>
<a href="#">Marble River Park</a>	<a href="#">Miracle Beach Park</a>	<a href="#">Mitlenatch Island Nature Park</a>	<a href="#">Morton Lake Park</a>
<a href="#">Muqqiwn (Brooks Peninsula) Park</a>	<a href="#">Nimpkish Lake Park</a>	<a href="#">Nuchatlitz Park</a>	<a href="#">Octopus Islands Marine Park</a>
<a href="#">Quatsino Park</a>	<a href="#">Raft Cove Park</a>	<a href="#">Read Island Park</a>	<a href="#">Rebecca Spit Marine Park</a>
<a href="#">Rendezvous Island South Park</a>	<a href="#">Rock Bay Marine Park</a>	<a href="#">Rosewall Creek Park</a>	<a href="#">Rugged Point Marine Park</a>



<a href="#"><u>Sabine Channel Marine Park</u></a>	<a href="#"><u>Santa Gertrudis-Boca del Infierno Park</u></a>	<a href="#"><u>Schoen Lake Park</u></a>	<a href="#"><u>Small Inlet Marine Park (Protected Area)</u></a>
<a href="#"><u>Smelt Bay Park</u></a>	<a href="#"><u>Strathcona - Westmin Park</u></a>	<a href="#"><u>Strathcona Park</u></a>	<a href="#"><u>Surge Narrows Park</u></a>
<a href="#"><u>Tahsish-Kwois Park</u></a>	<a href="#"><u>Thurston Bay Marine Park</u></a>	<a href="#"><u>Weymer Creek Park</u></a>	<a href="#"><u>White Ridge Park</u></a>
<a href="#"><u>White River Park</u></a>	<a href="#"><u>Wood Mountain Ski Park</u></a>	<a href="#"><u>Woss Lake Park</u></a>	

North Island / Central Coast Conservancies – alphabetical

<a href="#"><u>Broughton Archipelago Conservancy</u></a>	<a href="#"><u>Burdwood Group Conservancy</u></a>	<a href="#"><u>Catto Creek Conservancy</u></a>	<a href="#"><u>Cetan/Thurston Bay Conservancy</u></a>
<a href="#"><u>Dzawadi/Klinaklini Estuary Conservancy</u></a>	<a href="#"><u>Dzawadi/Upper Klinaklini River Conservancy</u></a>	<a href="#"><u>Forward Harbour/Yexeweyem Conservancy</u></a>	<a href="#"><u>Henyemdzi Mekola/Yorke Island Conservancy</u></a>
<a href="#"><u>Hunwadi/Ahnuhati-Bald Conservancy</u></a>	<a href="#"><u>Mahpahkum-Ahkwuna/Deserters-Walker Conservancy</u></a>	<a href="#"><u>Negiy/Nekite Estuary Conservancy</u></a>	<a href="#"><u>Palemin/Estero Basin Conservancy</u></a>
<a href="#"><u>Phillips Estuary/?Nacinuxw Conservancy</u></a>	<a href="#"><u>Polkinghorn Islands Conservancy</u></a>	<a href="#"><u>Qudes/Gillard-Jimmy Judd Island Conservancy</u></a>	<a href="#"><u>Qwiquallaag/Boat Bay Conservancy</u></a>
<a href="#"><u>T'sa-Lat'l/Smokehouse Conservancy</u></a>	<a href="#"><u>Ugwiwa'/Cape Caution Conservancy</u></a>	<a href="#"><u>Ugwiwa'/Cape Caution-Blunden Bay Conservancy</u></a>	<a href="#"><u>Wahkash Point Conservancy</u></a>
<a href="#"><u>Wakeman Estuary Conservancy</u></a>	<a href="#"><u>Wawley/Seymour Estuary Conservancy</u></a>	<a href="#"><u>Xwakwe?Naxde?Ma/St afford Estuary Conservancy</u></a>	

# Kootenay Okanagan

## Kootenay

All filming applicants must consult with the BC Parks Area Supervisor (see contact for Section Head below) to assess the viability of proposed filming activities prior to completing an application. Applicants may be assigned to work with a contractor, referred to as a Film Permit Liaison, to complete their application. The applicant will be invoiced by BC Parks for the Film Permit Liaison’s time.

Bree Matthewman – Park and Protected Areas Section Head

[bree.matthewman@gov.bc.ca](mailto:bree.matthewman@gov.bc.ca)

(778) 671-9140

401 – 333 Victoria Street, Nelson, BC

V1L 4K3

Alternative commercial filming information can be found at:

[Kootenay Film](#)

### Kootenay Parks and Conservancies – alphabetical

<a href="#"><u>Akamina-Kishinena Park</u></a>	<a href="#"><u>Arrow Lakes Park</u></a>	<a href="#"><u>Beaver Creek Park</u></a>	<a href="#"><u>Blanket Creek Park</u></a>
<a href="#"><u>Bugaboo Park</u></a>	<a href="#"><u>Burges and James Gadsden Park</u></a>	<a href="#"><u>Champion Lakes Park</u></a>	<a href="#"><u>Cody Caves Park</u></a>
<a href="#"><u>Columbia Lake Park</u></a>	<a href="#"><u>Crowsnest Park</u></a>	<a href="#"><u>Cummins Lake Park and Cummins River Protected Area</u></a>	<a href="#"><u>Drewry Point Park</u></a>
<a href="#"><u>Dry Gulch Park</u></a>	<a href="#"><u>Elk Lakes Park</u></a>	<a href="#"><u>Elk Valley Park</u></a>	<a href="#"><u>Elko park</u></a>
<a href="#"><u>Erie Creek Park</u></a>	<a href="#"><u>Gilnockie Park</u></a>	<a href="#"><u>Goat Range Park</u></a>	<a href="#"><u>Grohman Narrows Park</u></a>
<a href="#"><u>Hamber Park</u></a>	<a href="#"><u>Height of the Rockies Park</u></a>	<a href="#"><u>Incomappleux con</u></a>	<a href="#"><u>Inonoaklin</u></a>
<a href="#"><u>James Chabot Park</u></a>	<a href="#"><u>Jimsmith Lake Park</u></a>	<a href="#"><u>Kianuko Park</u></a>	<a href="#"><u>Kikomun Creek Park</u></a>
<a href="#"><u>King George VI Park</u></a>	<a href="#"><u>Kokanee Creek Park</u></a>	<a href="#"><u>Kokanee Glacier Park</u></a>	<a href="#"><u>Kootenay Lake Park</u></a>
<a href="#"><u>Lockhart Beach Park</u></a>	<a href="#"><u>Lockhart Creek Park</u></a>	<a href="#"><u>Marl Creek Park</u></a>	<a href="#"><u>Martha Creek Park</u></a>
<a href="#"><u>McDonald Creek Park</u></a>	<a href="#"><u>Morrissey Park</u></a>	<a href="#"><u>Mount Assiniboine Park</u></a>	<a href="#"><u>Mount Fernie Park</u></a>
<a href="#"><u>Mount Fernie Park</u></a>	<a href="#"><u>Nancy Greene Park</u></a>	<a href="#"><u>Norbury Lake Park</u></a>	<a href="#"><u>Pilot Bay Park</u></a>

<u>Premier Lake Park</u>	<u>Purcell Wilderness Conservancy Park and Corridor Protected Area</u>	<u>Rosebery Park</u>	<u>Ryan Park</u>
<u>St. Mary's Alpine Park</u>	<u>Stagleap Park</u>	<u>Summit Lake Park</u>	<u>Syringa Park</u>
<u>Thunder Hill Park</u>	<u>Top Of The World Park</u>	<u>Valhalla Park</u>	<u>Wardner Park</u>
<u>Wasa Lake Park</u>	<u>West Arm Park</u>	<u>Whiteswan Lake Park</u>	<u>Windermere Lake Park</u>
<u>Yahk Park</u>			

## Okanagan

All filming applicants must consult with the BC Parks Area Supervisor (see contact for Section Head below) to assess the viability of proposed filming activities prior to completing an application. Applicants may be assigned to work with a contractor, referred to as a Film Permit Liaison, to complete their application. The applicant will be invoiced by BC Parks for the Film Permit Liaison's time.

Mark Weston – Park and Protected Areas Section Head

[mark.weston@gov.bc.ca](mailto:mark.weston@gov.bc.ca)

(778) 622-6892

102 Industrial Place, Penticton, BC

V2A 7C8

Alternative commercial filming information can be found at:

[Okanagan Film Commission](#)

### Okanagan Parks and Recreation Areas - alphabetical

<a href="#">Allison Lake Park</a>	<a href="#">Anarchist Protected Area</a>	<a href="#">Bear Creek Park</a>	<a href="#">Boothman's Oxbow Park</a>
<a href="#">Boundary Creek Park</a>	<a href="#">Brent Mountain Protected Area</a>	<a href="#">Bromley Rock Park</a>	<a href="#">Browne Lake Park</a>
<a href="#">Cathedral Park and Protected Area</a>	<a href="#">Christina Lake Park</a>	<a href="#">Conkle Lake Park</a>	<a href="#">Darke Lake Park</a>
<a href="#">Denison-Bonneau Park</a>	<a href="#">E. C. Manning Park</a>	<a href="#">Echo Lake Park</a>	<a href="#">Ellison Park</a>
<a href="#">Enderby Cliffs Park</a>	<a href="#">Eneas Lakes Park</a>	<a href="#">Fintry Park and Protected Area</a>	<a href="#">Gilpin Grasslands Park</a>
<a href="#">Gladstone Park</a>	<a href="#">Granby Park</a>	<a href="#">Graystokes Park</a>	<a href="#">Greenbush Lake Protected Area</a>
<a href="#">Inkaneep Park</a>	<a href="#">Jewel Lake Park</a>	<a href="#">Johnstone Creek Park</a>	<a href="#">Kalamalka Lake Park</a>
<a href="#">Kekuli Bay Park</a>	<a href="#">Keremeos Columns Park</a>	<a href="#">Kettle River Recreation Area</a>	<a href="#">Kickinnee Park</a>
<a href="#">Kingfisher Creek Park</a>	<a href="#">Mabel Lake Park</a>	<a href="#">Mara Meadows Park</a>	<a href="#">Mara Park</a>
<a href="#">Monashee Park</a>	<a href="#">Mount Griffin Park</a>	<a href="#">Myra-Bellevue Park and Protected Area</a>	<a href="#">Nickel Plate Park</a>
<a href="#">Okanagan Lake Park</a>	<a href="#">Okanagan Mountain Park</a>	<a href="#">Otter Lake Park and Protected Area</a>	<a href="#">Pennask Creek Park</a>
<a href="#">Pennask Lake Park</a>	<a href="#">Rock Creek Park</a>	<a href="#">Shuswap River Islands Park</a>	<a href="#">Silver Star Park</a>
<a href="#">Skaha Bluffs Park</a>	<a href="#">Skookumchuck Rapids Park</a>	<a href="#">Snowy Protected Area</a>	<a href="#">South Okanagan Grasslands Protected Area</a>
<a href="#">Stemwinder Park</a>	<a href="#">Sun-Oka Beach Park</a>	<a href="#">s̓wíw̓s Park</a>	<a href="#">s̓x̓wəx̓ʷnitk̓ʷ Park</a>
<a href="#">Trepanier Park</a>	<a href="#">Upper Violet Creek Park</a>	<a href="#">Vaseux Lake Park</a>	<a href="#">Vaseux Protected Area</a>
<a href="#">Wap Creek Park</a>	<a href="#">White Lake Grasslands Protected Area</a>	<a href="#">Wrinkly Face Park</a>	

# North Coast Skeena

## Skeena (East)

All filming applicants must consult with the BC Parks Area Supervisor (see contact for Section Head below) to assess the viability of proposed filming activities prior to completing an application. Applicants may be assigned to work with a contractor, referred to as a Film Permit Liaison, to complete their application. The applicant will be invoiced by BC Parks for the Film Permit Liaison's time. Review the tables below to determine if your park is within [Skeena \(East\)](#) or [Skeena \(West\)](#).

Mike Neto – Park and Protected Areas Section Head

[mike.neto@gov.bc.ca](mailto:mike.neto@gov.bc.ca)

(250) 876-7110

3726 Alfred Avenue, Smithers, BC

V0J 2N0

Alternative commercial filming information can be found at:

[Travel Northern BC](#)

### Skeena East Parks and Conservancies - alphabetical

<a href="#">Anderson Flats Park</a>	<a href="#">Atlin/Áa Tlein Téix'i Park</a>	<a href="#">Atna River Park</a>	<a href="#">Babine Mountains Park and Trails</a>
<a href="#">Babine River Corridor Park</a>	<a href="#">Babine Lake Marine Park</a>	<a href="#">Bear Island Conservancy</a>	<a href="#">Border Lake Park</a>
<a href="#">Boulder Creek Park</a>	<a href="#">Bulkeley Junction Park</a>	<a href="#">Burnie River Protected Area</a>	<a href="#">Burnie-Shea Park</a>
<a href="#">Burns Lake Park</a>	<a href="#">Call Lake Park</a>	<a href="#">Choquette Hot Springs Park</a>	<a href="#">Chukachida Protected Area</a>
<a href="#">Craig Headwaters Protected Area</a>	<a href="#">Damdochax Protected Area</a>	<a href="#">Dead Man's Island Park</a>	<a href="#">Driftwood Canyon Park</a>
<a href="#">Entiako Park</a>	<a href="#">Ethel F. Wilson Memorial Park</a>	<a href="#">Francois Lake Park and Protected Area</a>	<a href="#">Golden Gate/Xáat Yádi Aani Conservancy</a>
<a href="#">Great Glacier Park</a>	<a href="#">Hyland River Park</a>	<a href="#">Indian Lake – Hitchcock Creek/Át Ch'îni Shà Conservancy</a>	<a href="#">Iskut River Hot Springs Park</a>
<a href="#">Kinaskan Lake Park</a>	<a href="#">Lava Forks Park</a>	<a href="#">Little Andrews Bay Marine Park</a>	<a href="#">Long Island Conservancy</a>
<a href="#">Monarch Mountain/a Xéegi Deiyi Conservancy</a>	<a href="#">Morice Lake Park</a>	<a href="#">Mount Edziza Park</a>	<a href="#">Mount Minto/K'iyán Conservancy</a>

<u><a href="#">Nadina Mountain Park</a></u>	<u><a href="#">Nakina - Inklin Rivers (Kuthai Area)/Yáwu Yaa Conservancy</a></u>	<u><a href="#">Nakina - Inklin Rivers/ Yáwu Yaa Conservancy</a></u>	<u><a href="#">Ne'áh' Conservancy</a></u>
<u><a href="#">Nenikëkh/Nanika-Kidprice Park</a></u>	<u><a href="#">Netalzul Meadows Park</a></u>	<u><a href="#">Nilkitkwa Lake Park</a></u>	<u><a href="#">Ningunsaw Park</a></u>
<u><a href="#">North Spit Conservancy</a></u>	<u><a href="#">Old Man Lake Park</a></u>	<u><a href="#">Pitman River Protected Area</a></u>	<u><a href="#">Port Arthur Conservancy</a></u>
<u><a href="#">Rainbow Alley Park</a></u>	<u><a href="#">Red Bluff Park</a></u>	<u><a href="#">Ross Lake Park</a></u>	<u><a href="#">Sanctuary Bay Conservancy</a></u>
<u><a href="#">Sand Point Conservancy</a></u>	<u><a href="#">Seeley Lake Park</a></u>	<u><a href="#">Spatsizi Headwaters Park</a></u>	<u><a href="#">Spatsizi Plateau Wilderness Park</a></u>
<u><a href="#">Stikine River Park</a></u>	<u><a href="#">Sustut Park and Protected Area</a></u>	<u><a href="#">Sutherland River Park and Protected Area</a></u>	<u><a href="#">Tā Ch'ilā (Boya Lake) Park</a></u>
<u><a href="#">Taku River/T'akú Téix' Conservancy</a></u>	<u><a href="#">Tarahne Park</a></u>	<u><a href="#">Tatlatui Park</a></u>	<u><a href="#">Tatshenshini - Alsek Park</a></u>
<u><a href="#">Tenh Dzetle Conservancy</a></u>	<u><a href="#">Todagin South Slope Park</a></u>	<u><a href="#">Topley Landing Park</a></u>	<u><a href="#">Tutshi Lake/T'ooch' Áayi Conservancy</a></u>
<u><a href="#">Tuya Mountains Park</a></u>	<u><a href="#">Tweedsmuir (North) Park and Corridor Protected Area</a></u>	<u><a href="#">Tyhee Lake Park</a></u>	<u><a href="#">Uncha Mountain Red Hills Park</a></u>
<u><a href="#">Upper Gladys River/Watsíx Deiyi Conservancy</a></u>	<u><a href="#">Wilkinson-Wright Bay Conservancy</a></u>	<u><a href="#">Willison Creek - Nelson Lake/Sít' Héeni Conservancy</a></u>	<u><a href="#">Wistaria Park</a></u>

## Skeena (West)

All filming applicants must consult with the BC Parks Area Supervisor (see contact for Section Head below) to assess the viability of proposed filming activities prior to completing an application. Applicants may be assigned to work with a contractor, referred to as a Film Permit Liaison, to complete their application. The applicant will be invoiced by BC Parks for the Film Permit Liaison's time. Review the tables below to determine if your park is within [Skeena \(East\)](#) or [Skeena \(West\)](#).

Janice Joseph – Park and Protected Areas Section Head

[janice.joseph@gov.bc.ca](mailto:janice.joseph@gov.bc.ca)

(778) 505-2048

Suite 102 – 3220 Eby Street, Terrace, BC  
V8G 5K8

Alternative commercial filming information can be found at:

[Travel Northern BC](#)

### Skeena West Parks and Conservancies -alphabetical

<a href="#">Alty Conservancy</a>	<a href="#">Anhluut'ukwsim Laxmihl Angwinga'asanakwhl (Nisga'a Memorial Lava Bed) Park</a>	<a href="#">Banks Nii Łuutiksm Conservancy</a>	<a href="#">Bear Glacier Park</a>
<a href="#">Bishop Bay-Monkey Beach Conservancy</a>	<a href="#">Bishop Bay-Monkey Beach Corridor Conservancy</a>	<a href="#">Brim River Hot Springs Protected Area</a>	<a href="#">Coste Rocks Park</a>
<a href="#">Crab Lake Conservancy</a>	<a href="#">Dala-Kildala Rivers Estuaries Park</a>	<a href="#">Diana Lake Park</a>	<a href="#">Eagle Bay Park</a>
<a href="#">Ecstall Headwaters Conservancy</a>	<a href="#">Ecstall-Sparkling Conservancy</a>	<a href="#">Ecstall-Spokskuut Conservancy</a>	<a href="#">Ethelda Bay-Tennant Island Conservancy</a>
<a href="#">Europa Lake Conservancy</a>	<a href="#">Exchamsiks River Park and Protected Area</a>	<a href="#">Foch-Gilttoeyes Park and Protected Area</a>	<a href="#">Gitnadoiks River Park and Protected Area</a>
<a href="#">Gitxaala Nii Łuutiksm/Kitkatla Conservancy</a>	<a href="#">Gunboat Harbour Conservancy</a>	<a href="#">Hai Lake - Mount Herman Park</a>	<a href="#">Hanna-Tintina Conservancy</a>
<a href="#">Huchsduwachsdu Nuyem Jees / Kitlope Heritage Conservancy</a>	<a href="#">Jesse Falls Protected Area</a>	<a href="#">K'distsausk/Turtle Point Conservancy</a>	<a href="#">K'lgaan/Klekane Conservancy</a>
<a href="#">K'mooda/Lowe-Gamble Conservancy</a>	<a href="#">K'nabiyaaxl/Ashdown Conservancy</a>	<a href="#">K'ootz/Khutze Conservancy</a>	<a href="#">K'waal Conservancy</a>
<a href="#">Kennedy Island Conservancy</a>	<a href="#">Khtada Lake Conservancy</a>	<a href="#">Khutzeymateen Park (Khutzeymateen/K'tzim-a-deen Grizzly Sanctuary)</a>	<a href="#">Khutzeymateen Inlet and Inlet West Conservancies</a>
<a href="#">Khyex Conservancy</a>	<a href="#">Kitimat River Park</a>	<a href="#">Kitson Island Marine Park</a>	<a href="#">Kitsumkalum Lake North Protected Area</a>
<a href="#">Kitsumkalum Park</a>	<a href="#">Kitwanga Mountain Park</a>	<a href="#">Kleanza Creek Park</a>	<a href="#">Klewnuggit Conservancy</a>
<a href="#">Klewnuggit Inlet Marine Park</a>	<a href="#">Ksi X'anmaas Conservancy</a>	<a href="#">Ksi xts'at'kw/Stagoo Conservancy</a>	<a href="#">Ktisgaidz/Macdonald Bay Conservancy</a>
<a href="#">Kts'mkta'ani/Union Lake Conservancy</a>	<a href="#">Lakelse Lake Park</a>	<a href="#">Lakelse Lake Wetlands Park</a>	<a href="#">Larcom Lagoon Conservancy</a>

<a href="#"><u>Lax Ka'gaas/Campania Conservancy</u></a>	<a href="#"><u>Lax Kul Nii Łuutiksm/Bonilla Conservancy</u></a>	<a href="#"><u>Lax Kwaxl/Dundas and Melville Islands</u></a>	<a href="#"><u>Lax Kwil Dziidz/Fin Conservancy</u></a>
<a href="#"><u>Lowe Inlet Marine Park</u></a>	<a href="#"><u>Lower Skeena River Park</u></a>	<a href="#"><u>Lucy Islands Conservancy</u></a>	<a href="#"><u>Lundmark Bog Protected Area</u></a>
<a href="#"><u>Manzanita Cove Conservancy</u></a>	<a href="#"><u>Maxtaktsm'aa/Union Passage Conservancy</u></a>	<a href="#"><u>Meziadin Lake Park</u></a>	<a href="#"><u>Moksgm'ol/Chapple-Cornwall Conservancy</u></a>
<a href="#"><u>Monckton Nii Łuutiksm Conservancy</u></a>	<a href="#"><u>Nalbeelah Creek Wetlands Park</u></a>	<a href="#"><u>Nisga'a Memorial Lava Bed Park and Protected Areas</u></a>	<a href="#"><u>Owyacumish River Park</u></a>
<a href="#"><u>Pa_aat Conservancy</u></a>	<a href="#"><u>Prudhomme Lake Park</u></a>	<a href="#"><u>Q'Altanaas/Aaltanhash Conservancy</u></a>	<a href="#"><u>Seven Sisters Park and Protected Area</u></a>
<a href="#"><u>Shearwater Hot Springs Conservancy</u></a>	<a href="#"><u>Simpson Lake East Conservancy</u></a>	<a href="#"><u>Skeena Bank Conservancy</u></a>	<a href="#"><u>Sleeping Beauty Mountain Park</u></a>
<a href="#"><u>Stair Creek Conservancy</u></a>	<a href="#"><u>Sue Channel Park</u></a>	<a href="#"><u>Swan Creek Protected Area</u></a>	<a href="#"><u>Swan Lake Kispiox River Park</u></a>
<a href="#"><u>Thulme Falls Conservancy</u></a>	<a href="#"><u>Union Passage Marine Park</u></a>	<a href="#"><u>Wales Harbour Conservancy</u></a>	<a href="#"><u>Weewanie Hot Springs Park</u></a>
<a href="#"><u>Woodworth Lake Conservancy</u></a>	<a href="#"><u>Zumtela Bay Conservancy</u></a>		

**Khutzeymateen Grizzly Bear Sanctuary, Inlet Conservancy, and Inlet West Conservancy**

<b>Location:</b>	45km from Prince Rupert	
<b>Park Contact:</b>	Area Supervisor: Kara Palangio	Email: <a href="mailto:kara.palangio@gov.bc.ca">kara.palangio@gov.bc.ca</a> Phone: (778) 947-0289
<b>Accessible Features:</b>	<ul style="list-style-type: none"> <li>• Coastline</li> <li>• Bays and coves</li> <li>• Mountains</li> <li>• Ocean</li> </ul>	<ul style="list-style-type: none"> <li>• River estuary</li> <li>• Forest</li> <li>• Grizzly bears</li> <li>• Marine wildlife</li> </ul>
<b>Services and Facilities:</b>	<ul style="list-style-type: none"> <li>• Visitor Centre and Public Bathroom</li> </ul>	<ul style="list-style-type: none"> <li>• Ranger Station</li> </ul>
<b>Important Dates</b> - <i>Special Conditions and Closures</i>	<ul style="list-style-type: none"> <li>• Access is prohibited when Gits'iis guardians are not present (this is generally from September through to late April).</li> <li>• Gits'iis guardians are present in the sanctuary from late April through to the end of August.</li> <li>• BC Parks, the Coast Tsimshian First Nations, and the Gits'iis Tribe collaboratively manage the sanctuary and protected areas</li> <li>• BC Parks, Lax Kw'alaams and Commercial Bear Viewing Guides have developed a collaborative partnership that ensures the Khutzeymateen Protected Areas continue to be managed proactively and public access are monitored conservatively to</li> </ul>	



## *Restrictions and Conditions*

ensure the Grizzly Bears and their habitats are the first priority. The bear viewing guides contribute a per person donation to the Khutzeymateen Park Enhancement Fund that collectively supports shared stewardship initiatives for Khutzeymateen Protected Areas. Filming applicants will be required to provide this donation for the time spent filming in the protected areas.

- This park has unique and sensitive Park values. Filming is limited in this park to ensure the protection of park values.
- All filming applicants must consult with the BC Parks Area Supervisor to assess the viability of proposed filming activities. Applicants will be required to work with the Gits'iis guardians who will be the Film Monitors for any filming within the sanctuary. The applicant will be invoiced by Lax Kwa'laams Band (administrator for the Gits'iis) for the Film Monitors time.
- Applicants should apply for a permit well in advance of the production date in order to secure desired dates.
- To limit disturbance to bears, the use of drones for filming may be prohibited or restricted.
- Agreements/negotiations may be required with the Gits'iis Tribe of the Lax Kwa'laams Band for use of this area.
- All filming applicants are encouraged to contact Andy Tait who is the spokesperson for the Gits'iis Tribe to discuss proposed filming activities prior to submitted an application. The area within the sanctuary and protected areas lies within the traditional territories of the Nine Allied Tribes of the Tsmishian Nation. Applicants can reach out to the Lax Kwa'laams Band for this park and protected area.

# Omineca Peace

## Omineca

All filming applicants must consult with the BC Parks Area Supervisor (see contact for Section Head below) to assess the viability of proposed filming activities prior to completing an application. Applicants may be assigned to work with a contractor, referred to as a Film Permit Liaison, to complete their application. The applicant will be invoiced by BC Parks for the Film Permit Liaison's time.

Peter Goetz – Park and Protected Areas Section Head

[peter.goetz@gov.bc.ca](mailto:peter.goetz@gov.bc.ca)

(250) 614-6699

4051 18<sup>th</sup> Avenue, Prince George, BC

V2N 1B3

Alternative commercial filming information can be found at:

[Travel Northern BC](#)

Omineca Parks – alphabetical

<a href="#"><u>Ancient Forest/Chun T'oh Whudujut Park and Protected Area</u></a>	<a href="#"><u>Arctic Pacific Lakes Park</u></a>	<a href="#"><u>Beaumont Park</u></a>	<a href="#"><u>Bijoux Falls Park</u></a>
<a href="#"><u>Bobtail Mountain Park</u></a>	<a href="#"><u>Carp Lake Park</u></a>	<a href="#"><u>Chase Park</u></a>	<a href="#"><u>Close-To-The-Edge Park and Protected Area</u></a>
<a href="#"><u>Crooked River Park</u></a>	<a href="#"><u>Dahl Lake Park</u></a>	<a href="#"><u>Ed Bird-Estella Lakes Park</u></a>	<a href="#"><u>Erg Mountain Park</u></a>
<a href="#"><u>Eskers Park</u></a>	<a href="#"><u>Evanoff Park</u></a>	<a href="#"><u>Finger-Tatuk Park</u></a>	<a href="#"><u>Finlay-Russel Park and Protected Area</u></a>
<a href="#"><u>Fort George Canyon Park</u></a>	<a href="#"><u>Foster Arm Protected Area</u></a>	<a href="#"><u>Fraser River Park</u></a>	<a href="#"><u>Giscome Portage Trail Protected Area</u></a>
<a href="#"><u>Heather-Dina Lakes Park</u></a>	<a href="#"><u>Holliday Creek Arch Protected Area</u></a>	<a href="#"><u>Jackman Flats Park</u></a>	<a href="#"><u>Kakwa Park and Protected Area</u></a>
<a href="#"><u>Lower Raush Protected Area</u></a>	<a href="#"><u>Morice Lake Park</u></a>	<a href="#"><u>Mount Blanchet Park</u></a>	<a href="#"><u>Mount Pope Park</u></a>
<a href="#"><u>Mount Robson Parks and Corridor Protected Area</u></a>	<a href="#"><u>Mount Terry Fox Park</u></a>	<a href="#"><u>Mudzenchoot Park</u></a>	<a href="#"><u>Muscovite Lakes Park</u></a>
<a href="#"><u>Nation Lakes Park</u></a>	<a href="#"><u>Nechako Canyon Protected Area</u></a>	<a href="#"><u>Omineca Park and Protected Area</u></a>	<a href="#"><u>Paarens Beach Park</u></a>
<a href="#"><u>Ptarmigan Creek Park and Protected Area</u></a>	<a href="#"><u>Purden Lake Park</u></a>	<a href="#"><u>Rearguard Falls Park</u></a>	<a href="#"><u>Rubyrock Lake Park</u></a>
<a href="#"><u>Slim Creek Park</u></a>	<a href="#"><u>Small River Caves Park</u></a>	<a href="#"><u>Sowchea Bay Park</u></a>	<a href="#"><u>Stuart Lake Marine Park</u></a>
<a href="#"><u>Stuart River Park</u></a>	<a href="#"><u>Sugarbowl - Grizzly Den Park and Protected Area</u></a>	<a href="#"><u>Takla Lake Marine Park</u></a>	<a href="#"><u>Three Sisters Lakes Park</u></a>
<a href="#"><u>Trembleur Lake Park</u></a>	<a href="#"><u>Tudyah Lake Park</u></a>	<a href="#"><u>Upper Raush Protected Area</u></a>	<a href="#"><u>West Lake Park</u></a>
<a href="#"><u>West Twin Park and Protected Area</u></a>	<a href="#"><u>Whiskers Point Park</u></a>		

## Peace

All filming applicants must consult with the BC Parks Area Supervisor (see contact for Section Head below) to assess the viability of proposed filming activities prior to completing an application. Applicants may be assigned to work with a contractor, referred to as a Film Permit Liaison, to complete their application. The applicant will be invoiced by BC Parks for the Film Permit Liaison's time.

Kerry Harvey – Park and Protected Areas Section Head

[kerry.harvey@gov.bc.ca](mailto:kerry.harvey@gov.bc.ca)

(778) 576-1136

400 – 10003 110<sup>th</sup> Avenue, Fort St. John, BC

V1J 6M7

Alternative commercial filming information can be found at:

[Travel Northern BC](#)

Peace Parks and Conservancy – alphabetical

<a href="#"><u>Bearhole Lake Park and Protected Area</u></a>	<a href="#"><u>Beatton Park</u></a>	<a href="#"><u>Beatton River Park</u></a>	<a href="#"><u>Bocock Peak Park</u></a>
<a href="#"><u>Buckinghorse River Wayside Park</u></a>	<a href="#"><u>Butler Ridge Park</u></a>	<a href="#"><u>Charlie Lake Park</u></a>	<a href="#"><u>Dall River Old Growth Park</u></a>
<a href="#"><u>Denetiah Park and Corridor Protected Area</u></a>	<a href="#"><u>Dune Za Keyih (Frog-Gataga) Park and Protected Area</u></a>	<a href="#"><u>East Pine Park</u></a>	<a href="#"><u>Ekwan Lake Protected Area</u></a>
<a href="#"><u>Goguka Creek Protected Area</u></a>	<a href="#"><u>Graham-Laurier Park</u></a>	<a href="#"><u>Gwillim Lake Park</u></a>	<a href="#"><u>Hay River Protected Area</u></a>
<a href="#"><u>Hole-In-The-Wall Park</u></a>	<a href="#"><u>Horneline Creek Park</u></a>	<a href="#"><u>Jackpine Remnant Protected Area</u></a>	<a href="#"><u>Kiskatinaw Park</u></a>
<a href="#"><u>Kiskatinaw River Park</u></a>	<a href="#"><u>Klin-se-za Park</u></a>	<a href="#"><u>Klua Lakes Protected Area</u></a>	<a href="#"><u>Kotcho Lake Village Site Park</u></a>
<a href="#"><u>Kwadacha Wilderness Park</u></a>	<a href="#"><u>Liard River Corridor Park and Protected Area and West Corridor Park</u></a>	<a href="#"><u>Liard River Hot Springs Park</u></a>	<a href="#"><u>Maxhamish Lake Park and Protected Area</u></a>
<a href="#"><u>Milligan Hills Park</u></a>	<a href="#"><u>Moberly Lake Park</u></a>	<a href="#"><u>Monkman Park</u></a>	<a href="#"><u>Muncho Lake Park</u></a>
<a href="#"><u>Northern Rocky Mountains Park and Protected Area</u></a>	<a href="#"><u>One Island Lake Park</u></a>	<a href="#"><u>Peace River Corridor Park</u></a>	<a href="#"><u>Pine Le Moray Park</u></a>
<a href="#"><u>Pine River Breaks Park</u></a>	<a href="#"><u>Pink Mountain Park</u></a>	<a href="#"><u>Portage Brule Rapids Protected Area</u></a>	<a href="#"><u>Prophet River Hot Springs Park</u></a>
<a href="#"><u>Prophet River Wayside Park</u></a>	<a href="#"><u>Redfern-Keily Park</u></a>	<a href="#"><u>Scatter River Old Growth Park</u></a>	<a href="#"><u>Sikanni Chief Canyon Park</u></a>
<a href="#"><u>Sikanni Chief Falls Protected Area</u></a>	<a href="#"><u>Sikanni Old Growth Park</u></a>	<a href="#"><u>Smith River Falls-Fort Halkett Park</u></a>	<a href="#"><u>Stone Mountain Park</u></a>
<a href="#"><u>Sukunka Falls Park</u></a>	<a href="#"><u>Swan Lake Park</u></a>	<a href="#"><u>Taylor Landing Park</u></a>	<a href="#"><u>Thinahtea North Protected Area</u></a>
<a href="#"><u>Thinahtea South Protected Area</u></a>	<a href="#"><u>Toad River Hot Springs Park</u></a>	<a href="#"><u>Tsaa Nuna Conservancy</u></a>	<a href="#"><u>Wapiti Lake Park</u></a>

# Thompson Cariboo

## Thompson

All filming applicants must consult with the BC Parks Area Supervisor (see contact for Section Head below) to assess the viability of proposed filming activities prior to completing an application. Applicants may be assigned to work with a contractor, referred to as a Film Permit Liaison, to complete their application. The applicant will be invoiced by BC Parks for the Film Permit Liaison's time.

Alan Hobler – Park and Protected Areas Section Head

[alan.hobler@gov.bc.ca](mailto:alan.hobler@gov.bc.ca)

(250) 312-6653

1259 Dalhousie Drive, Kamloops, BC

V2C 5Z5

Alternative commercial filming information can be found at:

[Thompson-Nicola Film Commission \(filmthompsonnicola.com\)](http://filmthompsonnicola.com)

### Thompson Parks and Conservancies – alphabetical

<a href="#"><u>Adams Lake Marine Park</u></a>	<a href="#"><u>Adams Lake Park - Bush Creek Site</u></a>	<a href="#"><u>Anstey Hunakwa Park</u></a>	<a href="#"><u>Arrowstone Park</u></a>
<a href="#"><u>Banana Island Park</u></a>	<a href="#"><u>Bedard Aspen Park</u></a>	<a href="#"><u>Blue Earth Lake Park</u></a>	<a href="#"><u>Blue River Black Spruce Park</u></a>
<a href="#"><u>Blue River Pine Park</u></a>	<a href="#"><u>Bonaparte Park</u></a>	<a href="#"><u>Bridge River Delta Park</u></a>	<a href="#"><u>Buse Lake Protected Area</u></a>
<a href="#"><u>Caligata Lake Park</u></a>	<a href="#"><u>Castle Rock Hoodoos Park</u></a>	<a href="#"><u>Chu Chua Cottonwood Park</u></a>	<a href="#"><u>Cinnemousun Narrows Park</u></a>
<a href="#"><u>Coldwater River Park</u></a>	<a href="#"><u>Cornwall Hills Park</u></a>	<a href="#"><u>Dunn Peak Park</u></a>	<a href="#"><u>Eagle River Park</u></a>
<a href="#"><u>Eakin Creek Canyon Park</u></a>	<a href="#"><u>Eakin Creek Floodplain Park</u></a>	<a href="#"><u>Elephant Hill Park</u></a>	<a href="#"><u>Emar Lakes Park</u></a>
<a href="#"><u>English Lake Park</u></a>	<a href="#"><u>Epsom Park</u></a>	<a href="#"><u>Finn Creek Park</u></a>	<a href="#"><u>Fred Antoine Park</u></a>
<a href="#"><u>Goldpan Park</u></a>	<a href="#"><u>Greenstone Mountain Park</u></a>	<a href="#"><u>Gwyneth Lake Park</u></a>	<a href="#"><u>Harbour-Dudgeon Lakes Park</u></a>
<a href="#"><u>Harry Lake Aspen Park</u></a>	<a href="#"><u>Herald Park</u></a>	<a href="#"><u>High Lakes Basin Park</u></a>	<a href="#"><u>Jewel Creek Protected Area</u></a>
<a href="#"><u>Juniper Beach Park</u></a>	<a href="#"><u>Kentucky-Alleyne Park</u></a>	<a href="#"><u>Lac Du Bois Grasslands Protected Area</u></a>	<a href="#"><u>Lac Le Jeune Park</u></a>
<a href="#"><u>Loon Lake Park</u></a>	<a href="#"><u>Marble Canyon Park</u></a>	<a href="#"><u>McConnell Lake Park</u></a>	<a href="#"><u>Momich Lakes Park</u></a>
<a href="#"><u>Monck Park</u></a>	<a href="#"><u>Monte Creek Park</u></a>	<a href="#"><u>Monte Lake Park</u></a>	<a href="#"><u>Mount Savona Park</u></a>

<a href="#"><u>Mud Lake Delta Park</u></a>	<a href="#"><u>Niskonlith Lake Park</u></a>	<a href="#"><u>North Thompson Islands Park</u></a>	<a href="#"><u>North Thompson Oxbows East Park</u></a>
<a href="#"><u>North Thompson Oxbows Jensen Islands Park</u></a>	<a href="#"><u>North Thompson Oxbows Manteau Park</u></a>	<a href="#"><u>North Thompson River Park</u></a>	<a href="#"><u>Oregana Creek Park</u></a>
<a href="#"><u>Oregon Jack Park</u></a>	<a href="#"><u>Painted Bluffs Park</u></a>	<a href="#"><u>Paul Lake Park</u></a>	<a href="#"><u>Pillar Park</u></a>
<a href="#"><u>Porcupine Meadows Park</u></a>	<a href="#"><u>Pritchard Park</u></a>	<a href="#"><u>Pukeashun Park</u></a>	<a href="#"><u>Pyramid Creek Falls Park</u></a>
<a href="#"><u>Roche Lake Park</u></a>	<a href="#"><u>Seton Portage Historic Park</u></a>	<a href="#"><u>Shuswap Lake Marine Park</u></a>	<a href="#"><u>Shuswap Lake Park</u></a>
<a href="#"><u>Silver Beach Park</u></a>	<a href="#"><u>Six Mile Hill Protected Area</u></a>	<a href="#"><u>Skihist Park</u></a>	<a href="#"><u>South Chilcotin Mountains Park</u></a>
<a href="#"><u>Steelhead Park</u></a>	<a href="#"><u>Stein Valley Nlaka'pamux Heritage Park</u></a>	<a href="#"><u>Taweel Park</u></a>	<a href="#"><u>Tsintsunko Lakes Park</u></a>
<a href="#"><u>Tsútswecw Park</u></a>	<a href="#"><u>Tunkwa Park</u></a>	<a href="#"><u>Upper Adams River Park</u></a>	<a href="#"><u>Upper Seymour River Park</u></a>
<a href="#"><u>Victor Lake Park</u></a>	<a href="#"><u>Walhachin Oxbows Park</u></a>	<a href="#"><u>Wallop Lake Park</u></a>	<a href="#"><u>Wells Gray Park</u></a>
<a href="#"><u>White Lake Park</u></a>	<a href="#"><u>Wire Cache Park</u></a>	<a href="#"><u>Yalakom Park</u></a>	<a href="#"><u>Yard Creek Park</u></a>

## Cariboo

All filming applicants must consult with the BC Parks Area Supervisor (see contact for Section Head below) to assess the viability of proposed filming activities prior to completing an application. Applicants may be assigned to work with a contractor, referred to as a Film Permit Liaison, to complete their application. The applicant will be invoiced by BC Parks for the Film Permit Liaison's time.

(Contact for Bowron-Cariboo, and Chilcotin Areas)

Chris Nowotny – Park and Protected Areas Section Head

[chris.nowotny@gov.bc.ca](mailto:chris.nowotny@gov.bc.ca)

(250) 302-4605

Suite 400 – 640 Borland Street, Williams Lake, BC

V2G 4T1

(Contact for Bella Coola and Central Coast Areas)

Steven Hodgson – Park and Protected Areas Section Head

[steven.hodgson@gov.bc.ca](mailto:steven.hodgson@gov.bc.ca)

(250) 982-2701

1650 Airport Road, PO Box 38, Hagensborg, BC

V0T 1H0

Alternative commercial filming information can be found at:

[Thompson-Nicola Film Commission \(filmthompsonnicola.com\)](http://filmthompsonnicola.com)

[Cariboo Chilcotin Coast](#)

### Cariboo Parks and Conservancies - alphabetical

<a href="#">Beaver Valley Park</a>	<a href="#">Becher's Prairie Park</a>	<a href="#">Bella Coola Estuary Conservancy</a>	<a href="#">Big Bar Lake Park</a>
<a href="#">Big Basin Park</a>	<a href="#">Big Creek Park</a>	<a href="#">Bowron Lake Park</a>	<a href="#">Bridge Lake Park</a>
<a href="#">Bull Canyon Park</a>	<a href="#">Burnt Bridge Creek Conservancy</a>	<a href="#">Calvert Island Conservancy</a>	<a href="#">Canim Beach Park</a>
<a href="#">Cariboo Mountains Park</a>	<a href="#">Cariboo Nature Park</a>	<a href="#">Cariboo River Park</a>	<a href="#">Carter Bay Conservancy</a>
<a href="#">Cascade-Sutslem Conservancy</a>	<a href="#">Cedar Point Park</a>	<a href="#">Chasm Park</a>	<a href="#">Churn Creek Protected Area</a>
<a href="#">Clayton Falls Conservancy</a>	<a href="#">Clyak Estuary Conservancy</a>	<a href="#">Codville Lagoon Conservancy</a>	<a href="#">Codville Lagoon Marine Park</a>
<a href="#">Copper Johnny Park</a>	<a href="#">Cottonwood River Park</a>	<a href="#">Cranstown Point Conservancy</a>	<a href="#">Crater Lake Park</a>
<a href="#">Dantes Inferno Park</a>	<a href="#">Dean River Conservancy</a>	<a href="#">Dean River Corridor Conservancy</a>	<a href="#">Donnelly Lake Park</a>

<a href="#"><u>Downing Park</u></a>	<a href="#"><u>Dragon Mountain Park</u></a>	<a href="#"><u>Edge Hills Park</u></a>	<a href="#"><u>Eleven Sisters Park</u></a>
<a href="#"><u>Ellerslie-Roscoe Conservancy</u></a>	<a href="#"><u>Emily Lake Conservancy</u></a>	<a href="#"><u>Fiordland Conservancy</u></a>	<a href="#"><u>Flat Lake Park</u></a>
<a href="#"><u>Fraser River Breaks Park</u></a>	<a href="#"><u>French Bar Creek Park</u></a>	<a href="#"><u>Goat Cove Conservancy</u></a>	<a href="#"><u>Goose Bay Conservancy</u></a>
<a href="#"><u>Green Inlet Marine Park</u></a>	<a href="#"><u>Green Lake Park</u></a>	<a href="#"><u>Hakai Conservation Study Area</u></a>	<a href="#"><u>Hakai Lúxvbálfs Conservancy</u></a>
<a href="#"><u>Homathko River-Tatlayoko Protected Area</u></a>	<a href="#"><u>Horsefly Lake Park</u></a>	<a href="#"><u>Hot Springs-No Name Creek Conservancy</u></a>	<a href="#"><u>Itcha Ilgachuz Park</u></a>
<a href="#"><u>Jackson Narrows Marine Park</u></a>	<a href="#"><u>Jump Across Conservancy</u></a>	<a href="#"><u>Junction Sheep Range</u></a>	<a href="#"><u>Kilbella Estuary Conservancy</u></a>
<a href="#"><u>Kimsquit Estuary Conservancy</u></a>	<a href="#"><u>Kitasoo Spirit Bear Conservancy</u></a>	<a href="#"><u>Kluskoi Lake Park</u></a>	<a href="#"><u>Koeye Conservancy</u></a>
<a href="#"><u>Kt'ii/Racey Conservancy</u></a>	<a href="#"><u>Kwatna Estuary Conservancy</u></a>	<a href="#"><u>Lac La Hache Park</u></a>	<a href="#"><u>Lady Douglas-Don Peninsula Conservancy</u></a>
<a href="#"><u>Lockhart-Gordon Conservancy</u></a>	<a href="#"><u>Long Creek Park</u></a>	<a href="#"><u>Machmell Conservancy</u></a>	<a href="#"><u>Marble Range Park</u></a>
<a href="#"><u>Moose Valley Park</u></a>	<a href="#"><u>Namu Conservancy and Corridor Conservancy</u></a>	<a href="#"><u>Nazko Lake Park</u></a>	<a href="#"><u>Noosenseck Conservancy</u></a>
<a href="#"><u>Nunsti Park</u></a>	<a href="#"><u>Oliver Cove Marine Park</u></a>	<a href="#"><u>Outer Central Coast Islands Conservancy</u></a>	<a href="#"><u>Owikeno Conservancy</u></a>
<a href="#"><u>Patterson Lake Park</u></a>	<a href="#"><u>Penrose Island Marine Park</u></a>	<a href="#"><u>Penrose-Ripon Conservancy</u></a>	<a href="#"><u>Pinnacles Park</u></a>
<a href="#"><u>Pooley Conservancy</u></a>	<a href="#"><u>Puntchesakut Lake Park</u></a>	<a href="#"><u>Punti Island Park</u></a>	<a href="#"><u>Quesnel Lake Park</u></a>
<a href="#"><u>Rainbow/Q'iwentem Park</u></a>	<a href="#"><u>Redbrush Park</u></a>	<a href="#"><u>Rescue Bay Conservancy</u></a>	<a href="#"><u>Restoration Bay Conservancy</u></a>
<a href="#"><u>Ruth Lake Park</u></a>	<a href="#"><u>Schoolhouse Lake Park</u></a>	<a href="#"><u>Sheemahant Conservancy</u></a>	<a href="#"><u>Sir Alexander Mackenzie Park</u></a>
<a href="#"><u>Smithers Island Conservancy</u></a>	<a href="#"><u>Ten Mile Lake Park</u></a>	<a href="#"><u>Thorsen Creek Conservancy</u></a>	<a href="#"><u>Titetown Park</u></a>
<a href="#"><u>Troup Passage Conservancy</u></a>	<a href="#"><u>Ts'il?os Park</u></a>	<a href="#"><u>Tweedsmuir (South) Park</u></a>	<a href="#"><u>Upper Kimsquit River Conservancy</u></a>
<a href="#"><u>Wendle Park</u></a>	<a href="#"><u>White Pelican Park</u></a>		

## Tweedsmuir (South) Park

<i>Location:</i>	390km west from Williams Lake (Hwy 20)	
<i>Park Contact:</i>	Area Supervisor: Rae Busse	Email: rae.busse@gov.bc.ca Phone: (250) 982-2701
<i>Accessible Features:</i>	<ul style="list-style-type: none"> <li>• Old growth forests</li> <li>• Mountain views</li> </ul>	<ul style="list-style-type: none"> <li>• Wildlife</li> <li>• River</li> </ul>
<i>Services and Facilities:</i>	<ul style="list-style-type: none"> <li>• Water handpumps</li> </ul>	<ul style="list-style-type: none"> <li>• Pit toilets</li> </ul>
<i>Important Dates</i> - <i>Special Conditions and Closures</i>	<ul style="list-style-type: none"> <li>• Bears utilize the Atnarko River corridor for salmon fishing during the fall salmon run between August 15 and October 1 each year. The opportunity for bear viewing is carefully managed by BC Parks in collaboration with local First Nations to limit disturbance to bears and protect public safety.</li> <li>• The Belarko Bear Viewing platform is very busy with visiting public and ongoing research programs between September 1 to September 30, and may be unable to accommodate space for commercial film productions. Productions are encouraged to avoid weekend visitation to limit disturbance to public access and viewing.</li> <li>• In the interest of public safety and for the protection of critical bear habitat, certain areas in the park are closed during the bear viewing season. Check the BC Parks website for up-to-date information.</li> <li>• To allow sufficient time to plan and accommodate commercial filming in this busy area between August 15 and October 1, film productions should contact the BC Parks' Area Supervisor no later than August 1 to confirm feasibility of proposed shooting dates and begin the application process. BC Parks has Collaborative Management Agreements in place with First Nations for Tweedsmuir Park, and First Nations engagement on a filming application may take 2 weeks or more.</li> </ul>	
<i>Restrictions and Conditions</i>	<ul style="list-style-type: none"> <li>• To limit disturbance to bears during the sensitive and important salmon fishing season, the use of drones for filming is not supported by BC Parks between August 15 and October 1.</li> <li>• Drift viewing of bears down the Atnarko River via boats is regulated and restricted by BC Parks to limit disturbance to bears while they are feeding during the salmon run. A limited number of viewing days has been allocated to qualified commercial operators, and film productions wishing to capture footage from the river must book a trip with an operator that holds a valid park use permit. Contacting</li> </ul>	



operators early in the season will increase the chances of booking available spots.

- All filming applicants are encouraged to contact the Nuxalk First Nation and the Ulkatcho First Nation to discuss proposed filming activities prior to submitting an application. The area along the Atnarko River lies within the traditional territories of these two First Nations. Applicants can reach out to the nations' respective band offices:
  - Nuxalk First Nation
  - Ulkatcho First Nation